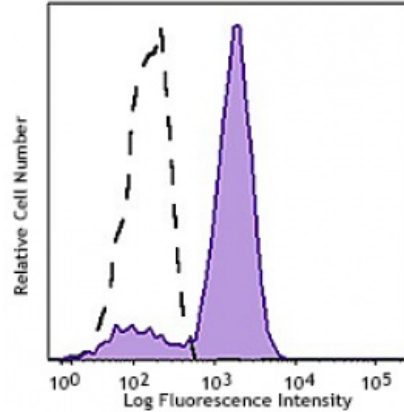


**Pacific Blue™ anti-HA.11 Epitope Tag**

<b>Catalog # / Size:</b>	5107625 / 25 µg 5107630 / 100 µg
<b>Clone:</b>	16B12
<b>Isotype:</b>	Mouse IgG1, κ
<b>Immunogen:</b>	Monoclonal antibody HA.11 was raised against the twelve amino acid peptide CYPDVDPDYASL.
<b>Reactivity:</b>	Other
<b>Preparation:</b>	The antibody was purified by affinity chromatography and conjugated with Pacific Blue™ under optimal conditions. The solution is free of unconjugated Pacific Blue™.
<b>Formulation:</b>	Phosphate-buffered solution, pH 7.2, containing 0.09% sodium azide.
<b>Concentration:</b>	0.5 mg/ml



CHO-K1 cells (open histogram) or HA tag stably transfected cells (filled histogram) were fixed with Fixation Buffer (Cat. No. 420801), permeabilized with True-Phos™ Perm Buffer (Cat. No. 425401), then intracellularly stained with HA.11 Epitope Tag (

**Applications:**

<b>Applications:</b>	Intracellular Flow Cytometry
<b>Recommended Usage:</b>	Each lot of this antibody is quality control tested by intracellular immunofluorescent staining with flow cytometric analysis. For flow cytometric staining, the suggested use of this reagent is ≤0.5 µg per million cells in 100 µl volume. It is recommended that the reagent be titrated for optimal performance for each application.

\* Pacific Blue™ has a maximum emission of 455 nm when it is excited at 405 nm. Prior to using Pacific Blue™ conjugate for flow cytometric analysis, please verify your flow cytometer's capability of exciting and detecting the fluorochrome.

<b>Application Notes:</b>	Additional tested and reported applications of the 16B12 clone for the relevant formats include: western blot (WB), immunocytochemistry (ICC), immunoprecipitation (IP), and flow cytometry (FC).
---------------------------	---

\*Our Posi-Tag Control Protein (931301) can be used as a helpful positive control for this antibody.

This second-generation HA antibody is an excellent substitute for the 12CA5 monoclonal antibody. The HA.11 antibody recognizes the influenza hemagglutinin epitope (YPYDVDPDYA) which has been used extensively as a general epitope tag in expression vectors. The extreme specificity of the antibody allows unambiguous identification and quantitative analysis of the tagged protein. The HA.11 antibody recognizes HA epitopes located in the middle of protein sequences as well as at the N- or C-terminus.

<b>Description:</b>	The HA tag (hemagglutinin) is an amino acid sequence derived from the human influenza hemagglutinin surface glycoprotein, corresponding to amino acids 98-106. It is commonly used as a tag to facilitate detection, isolation, and
---------------------	---

purification of proteins. The full amino acid sequence is: YPYDVPDYA.