

PE anti-P2RY12

Catalog # / Size: 4840020 / 100 µg
4840015 / 25 µg

Clone: S16007D

Isotype: Rat IgG2b, κ

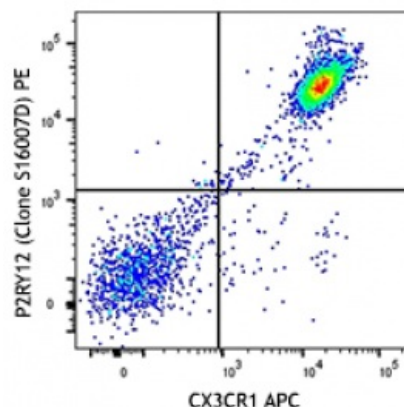
Immunogen: Mouse P2RY12.

Reactivity: Mouse

Preparation: The antibody was purified by affinity chromatography and conjugated with PE under optimal conditions. The solution is free of unconjugated PE and unconjugated antibody.

Formulation: Phosphate-buffered solution, pH 7.2, containing 0.09% sodium azide.

Concentration: 0.2 mg/ml



Brain from a C57BL/6 mouse were digested with collagenase and microglial cells were enriched with a percoll gradient and the stained with CX3CR1 APC and P2RY12 (clone S16007D) PE (top) or rat IgG2b

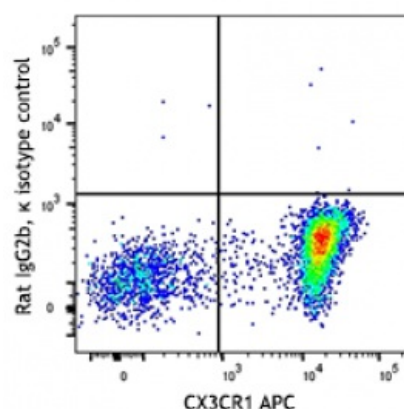
Applications:

Applications: Flow Cytometry

Recommended Usage: Each lot of this antibody is quality control tested by immunofluorescent staining with flow cytometric analysis. For flow cytometric staining, the suggested use of this reagent is ≤0.25 µg per million cells in 100 µl volume. It is recommended that the reagent be titrated for optimal performance for each application.

Application Notes: View the [video](#) of our collaborator discussing the importance of highly specific monoclonal antibodies for P2RY12 in Microglia research.

Application References: 1. Orr AG, *et al.* 2009. *Nat. Neurosci.* 12(7):872-8.



Description: Purinergic Receptor P2Y (P2RY12) is a receptor for ADP and ATP coupled to G-proteins that inhibit the adenylyl cyclase second messenger system. P2RY12 is not activated by UDP and UTP. Required for normal platelet aggregation and blood coagulation. P2RY12 is a highly selective marker for microglia that specifically distinguishes these cells from other myeloid cells.

Antigen References: 1. Orr AG, *et al.* 2009. *Nat. Neurosci.* 12(7):872-8.