

Purified anti-His Tag

Catalog # / Size: 3862525 / 1 mg
 3862505 / 25 µg
 3862510 / 100 µg

Clone: J099B12

Isotype: Mouse IgG1, κ

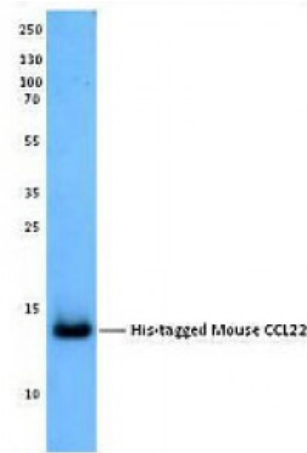
Immunogen: KLH-conjugated His-tag peptide

Reactivity: Human, Mouse, Non-human primate, Other, Rat

Preparation: The antibody was purified by affinity chromatography.

Formulation: This antibody is provided in phosphate-buffered solution, pH 7.2, 0.09% NaN₃.

Concentration: 0.5

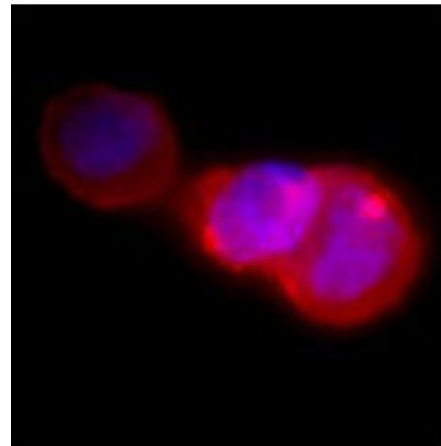


Insect cell supernatant expressing His-tagged mouse CCL22 was resolved by electrophoresis, transferred to nitrocellulose, and probed with anti-His Tag antibody (clone J099B12). Proteins were visualized using a goat anti-mouse IgG secondary conjugated to H

Applications:

Applications: Other

Recommended Usage: Each lot of this antibody is quality control tested by Western blotting. Western blotting, suggested working dilution(s): Use 0.1-0.2 microg/ml antibody dilution buffer for each mini-gel. Immunofluorescence microscopy, suggested working dilution(s): Use 0.5-1.0 microg/ml antibody dilution buffer. It is recommended that the reagent be titrated for optimal performance for each application.



293E cells transfected with His-tagged human pro-IL1β were probed with anti-His Tag antibody (clone J099B12). The cells were then detected by DyLight™ 594 conjugated anti-mouse IgG1 secondary (cytosol, red) and DAPI (nuclei, blue).

Application References: 1. Burritt JB, *et al.* 1995. *J. Biol. Chem.* 270:16974.
 2. Taylor RM, *et al.* 2007. *Methods Mol. Biol.* 412:429.

Description: This antibody was raised against linear 8XHis tag. It reacts with His tag protein, either C, N, or internal His6 and up repeats. It can be used for Western blotting to detect linear His repeat (His6 or more). It can also be used for ICFC and IF staining of His-Tagged protein.