

PE anti-STAT3 Phospho (Tyr705)

Catalog # / Size: 3855020 / 100 tests
3855015 / 25 tests

Clone: 13A3-1

Isotype: Mouse IgG1, κ

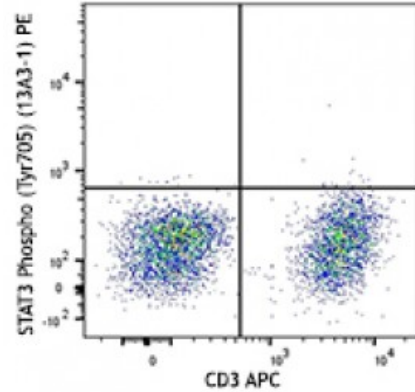
Immunogen: KLH conjugated modified synthetic peptide

Reactivity: Human, Mouse

Preparation: The antibody was purified by affinity chromatography and conjugated with PE under optimal conditions. The solution is free of unconjugated PE and unconjugated antibody.

Formulation: Phosphate-buffered solution, pH 7.2, containing 0.09% sodium azide and 0.2% (w/v) BSA (origin USA).

Concentration: Lot-specific



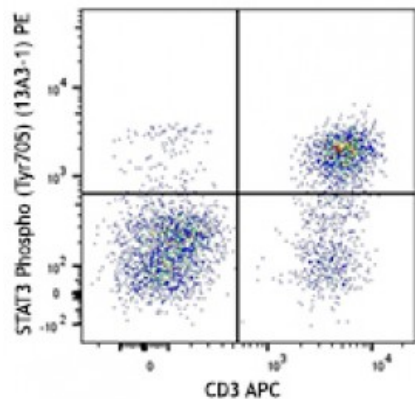
Applications:

Applications: Flow Cytometry

Recommended Usage: Each lot of this antibody is quality control tested d Protocol. For flow cytometric staining, the suggested use of this reagent is 5 microL per million cells or 5 microL per 100 microL of whole blood. It is recommended that the reagent be titrated for optimal performance for each application.

Application Notes: The STAT3 Phospho (Tyr705) antibody recognizes the regulatory tyrosine phosphorylation of human STAT3 protein and has been shown to be useful for Western blotting.

View supplemental data sheet for mouse reactivity for intracellular flow cytometry.



Human whole blood was stimulated with (top), or without (bottom), IL-6 for 15 minutes, and then treated with RBC Lysis/Fixation Solution (10X), surface stained with CD3 APC, permeabilized with True-Phos™ Perm Buffer, and then intracellularly stained.

Description: Tyrosine phosphorylation of STAT3 at Tyr705 occurs in response to LIF, IL-6, leptin, OSM, EGF, PDGF, and HGF. It plays a key role in cell growth and apoptosis through mediating expression of a variety of genes in response to the stimuli.

- Antigen References:**
1. Akira S, *et al.* 1994. *Cell* 77:63.
 2. Zhang X, *et al.* 1995. *Science* 267:1990.
 3. Sanchez-Margalet V, *et al.* 2001. *Cell. Immunol.* 211:30.
 4. Simon A, *et al.* 2000. *Sci*