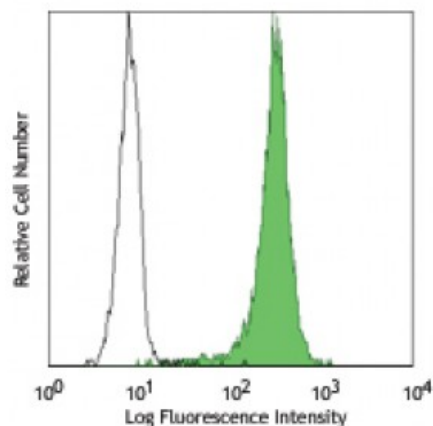


Alexa Fluor® 488 anti-Hsp70

Catalog # / Size:	3840020 / 100 tests 3840015 / 25 tests
Clone:	W27
Isotype:	Mouse IgG2a, λ
Immunogen:	Hsp70 protein from HeLa cells.
Reactivity:	Human
Preparation:	The antibody was purified by affinity chromatography, and conjugated with Alexa Fluor® 488 under optimal conditions.
Formulation:	Phosphate-buffered solution, pH 7.2, containing 0.09% sodium azide and 0.2% (w/v) BSA (origin USA).
Concentration:	Lot-specific



Human cervical cancer cell line, HeLa, intracellularly stained with W27 Alexa Fluor® 488

Applications:

Applications:	Flow Cytometry
Recommended Usage:	Each lot of this antibody is quality control tested by intracellular immunofluorescent staining with flow cytometric analysis. For flow cytometric staining, the suggested use of this reagent is 5 microL per million cells or 5 microL per 100 microL of whole blood. It is recommended that the reagent be titrated for optimal performance for each application.
	* Alexa Fluor® 488 has a maximum emission of 519 nm when it is excited at 488 nm.

Description: Hsp70 is a member of the Hsp family of highly conserved proteins that play a role in a number of important functions. Their synthesis is increased upon environmental stress. They function by acting as molecular chaperones, facilitating protein refolding and preventing protein aggregation. It has been reported that extracellular Hsp70 also exhibits immunomodulatory effects on innate and acquired immunity.

Antigen References:

1. Sharma D, *et al.* 2009. *Protein Peptide Lett.* 16:571.
2. Johnson JD, *et al.* 2006. *J. Leuk. Biol.* 79:425.
3. Bukau B, *et al.* 1998. *Cell* 92:351.