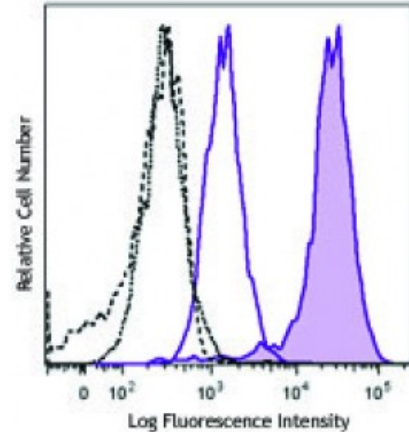


**PE anti-IRF4**

<b>Catalog # / Size:</b>	3832015 / 25 µg 3832020 / 100 µg
<b>Clone:</b>	IRF4.3E4
<b>Isotype:</b>	Rat IgG1, κ
<b>Immunogen:</b>	GST fusion protein containing C-terminal of murine IRF4
<b>Reactivity:</b>	Human, Mouse
<b>Preparation:</b>	The antibody was purified by affinity chromatography and conjugated with PE under optimal conditions. The solution is free of unconjugated PE and unconjugated antibody.
<b>Formulation:</b>	Phosphate-buffered solution, pH 7.2, containing 0.09% sodium azide.
<b>Concentration:</b>	0.2



PHA-stimulated (3 days) or freshly isolated human peripheral lymphocytes were stained with CD4 APC, then fixed and permeabilized with Nuclear Factor Fixation and Permeabilization Buffer Set (Cat. No. 422601). Cells were then stained with IRF4 (clone IRF4).

**Applications:**

<b>Applications:</b>	Flow Cytometry
<b>Recommended Usage:</b>	Each lot of this antibody is quality control tested by intracellular immunofluorescent staining using our nuclear factor staining protocol. For flow cytometric staining, the suggested use of this reagent is ≤0.25 microg per million cells in 100 microL volume. It is recommended that the reagent be titrated for optimal performance for each application.
<b>Application References:</b>	1. Zheng Y, <i>et al.</i> 2009. <i>Nature</i> 458:351 2. Yin SY, <i>et al.</i> 2011. <i>Exp Cell Res.</i> 317:2210. <a href="#">PubMed</a>

**Description:** The IRF family consists of at least nine members. IRF4 and IRF8 are highly homologous to each other and also redundant in function. IRF4 is critical for Th2 and Th17 development. Together with TRF8, it plays an essential role in macrophage and dendritic cell development and function. IRF4 is also reported to be essential for pre-B cell development, receptor editing, germinal center reactor and plasma cell differentiation.

**Antigen References:** 1. Lu R. 2008. *Trends Immunol* 29:487.