

FITC Annexin V

Catalog # / Size: 3804725 / 300 tests
 3804525 / 25 tests
 3804530 / 100 tests

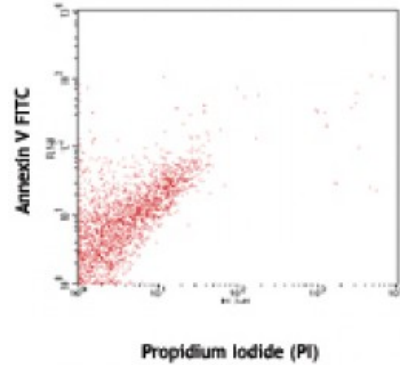
Isotype:

Reactivity: Human, Mouse, Non-human primate, Other, Rat

Preparation: The purified protein was conjugated with FITC under optimal conditions. The solution is free of unconjugated FITC.

Formulation: Phosphate-buffered solution, pH 7.2, containing 0.09% sodium azide and 0.2% (w/v) BSA (origin USA).

Concentration: Lot-specific

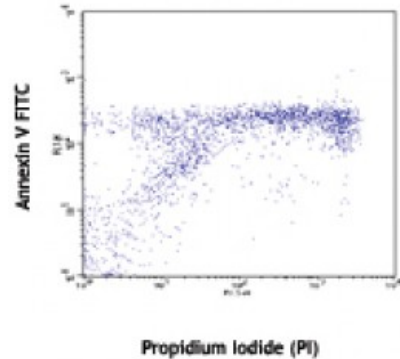


Human T leukemia cell line, Jurkat, non-treated (top) or treated (bottom) with BioLegend's anti-human CD95 (EOS9.1) mAb (cat. 305704) for 6 hours, then stained with Annexin V-FITC and Propidium Iodide (PI) (cat. 421301)

Applications:

Applications: Flow Cytometry

Recommended Usage: Each lot of this product is quality control tested by immunofluorescent staining with flow cytometric analysis. For flow cytometric staining, the suggested use of this reagent is 5 microL per 100,000 - million cells in a 100 microL volume of Annexin V Binding Buffer (Cat No. 422201). It is recommended that the reagent be titrated for optimal performance for each application.



Application Notes: **Annexin V Staining**

1. Wash cells twice with cold BioLegend cell staining buffer (cat # 420201) and then resuspend cells in Annexin V Binding Buffer (cat # 422201) at a concentration of 1x10e6 cells/ml.
2. Transfer 100 microL of cell suspension in 5 ml test tube.
3. Add 5 microL of FITC Annexin V.
4. Add 10 microL of PI solution (cat # 421301) or 7-AAD (cat # 420403/420404).
5. Gently vortex the cells and incubate for 15 min at RT (25 °C) in the dark.
6. Add 400 microL of Annexin V Binding Buffer (cat # 422201) to each tube. Analyze by flow cytometry.

Application 1. Koopman G, et al. 1994. *Blood* 84:1415.

- References:**
2. Vermes I, et al. 1995. *J. Immunol. Methods* 184:39.
 3. Dachary-Prigent J, et al. 1993. *Blood* 81:2554.
 4. Sekine C, et al. 2009. *Int Immunol.* [PubMed](#)
 5. Grujic M, et al. 2010. *J. Immunol.* 185:1730. [PubMed](#)
 6. Mulik RS, et al. 2010. *Int J Pharm.* 398:190. [PubMed](#)
 7. Gupta A, et al. 2011. *Leuk Res.* 35:1498. [PubMed](#)
 8. Speth C, et al. 2013. *J Infect Dis.* 207:823. [PubMed](#)
 9. Wang Q, et al. 2013. *Genes Dev.* 27:615. [PubMed](#)
 10. Gill K, et al. 2013. *Biochim Biophys Acta.* 830:2763. [PubMed](#)
 11. Juel HB, et al. 2013. *PLoS One.* 8:64619. [PubMed](#)
 12. Hellmann J, et al. 2013. *J. Immunol.* 191:1383. [PubMed](#)
 13. Sequier S, et al. 2013. *PLoS One.* 8:70937. [PubMed](#)
 14. Galski H, et al. 2013. *Biochem Pharmacol.* 86:584. [PubMed](#)
 15. Chen YL, et al. 2013. *J Exp Med.* [PubMed](#)
 16. Lin WH, et al. 2014. *PLoS One.* 9:83160. [PubMed](#)
 17. Salge-Bartles U, 2014. *Thromb res.* 133:244. [PubMed](#)
 18. Zhang X, et al. 2014. *Acta Biochim Biophys Sin.* 46:261. [PubMed](#)
 19. Intermann J, et al. 2014. *Cell Signal.* 26:1567. [PubMed](#)
 20. de Vires M, 2014. *Am J Physiol Lung Cell Mol Physiol.* 307:240. [PubMed](#)
 21. M Parrula MC, et al. 2014. *Virus Res.* 189:206. [PubMed](#)
 22. Passaro C, et al. 2014. *Mol Oncol.* 9:78. [PubMed](#)
 23. Tsou WI, et al. 2014. *J Biol Chem.* 289:25750. [PubMed](#)
 24. Awojodu AO, et al. 2014. *Blood.* 124:1941. [PubMed](#)
 25. Xiong R, et al. 2014. *Toxicol Appl Pharmacol.* 280:285. [PubMed](#)
 26. Liu J, et al. 2015. *J Mol Cell Cardiol.* 80:10. [PubMed](#)
-

Description: Annexin V (or Annexin A5) is a member of the annexin family of intracellular proteins that binds to phosphatidylserine (PS) in a calcium-dependent manner. PS is normally only found on the intracellular leaflet of the plasma membrane in healthy cells, but during early apoptosis, membrane asymmetry is lost and PS translocates to the external leaflet. Fluorochrome-labeled Annexin V can then be used to specifically target and identify apoptotic cells. Annexin V Binding Buffer (cat. no. 422201) is recommended for use with Annexin V staining. Annexin V binding alone cannot differentiate between apoptotic cells and necrotic. So, we recommend using our 7-AAD Viability Staining Solution (cat. no. 420403/420404) or Propidium Iodide Solution (cat. no. 421301). Early apoptotic cells will exclude 7-AAD and PI, while late stage apoptotic cells and necrotic cells will stain positively, due to the passage of these dyes into the nucleus where they bind to DNA.