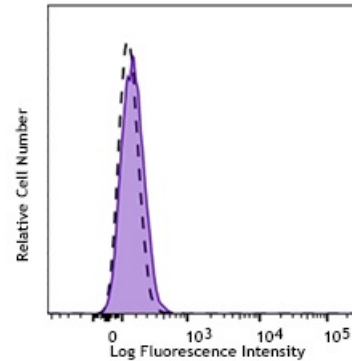


Alexa Fluor® 647 anti-FOXA1

Catalog # / 3660015 / 25 µg
Size: 3660020 / 100 µg
Clone: 2F83
Isotype: Mouse IgG1, κ
Immunogen: Full length recombinant human FOXA1
Reactivity: Human
Concentration: 0.5 mg/ml



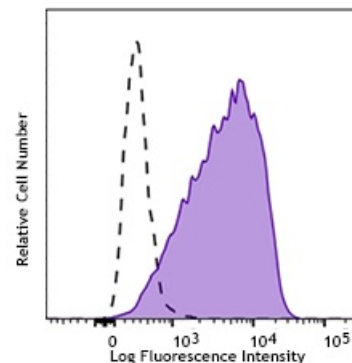
HEL cells were treated with True-Nuclear™ Transcription Factor Buffer Set then stained with anti-FOXA1 (clone 2F83) Alexa Fluor® 647 (filled histogram) or Mouse IgG1, κ Alexa Fluor® 647 isotype control (open histogram).

Applications:

Applications: Intracellular Flow Cytometry

Recommended Usage: Each lot of this antibody is quality control tested. For flow cytometric staining, the suggested use of this reagent is ≤0.65 µg per million cells in 100 µl volume. It is recommended that the reagent be titrated for optimal performance for each application.

Application Notes: When using this clone for western blot, we highly recommend using lysate that has not been subjected to any freeze-thaw cycles.



MCF-7 cells were treated with True-Nuclear™ Transcription Factor Buffer Set then stained with anti-FOXA1 (clone 2F83) Alexa Fluor® 647 (filled histogram) or Mouse IgG1, κ Alexa Fluor® 647 isotype control (open histogram).

Application References:

1. Besenard V, et al. 2004. *Gene Expr Patterns*. 5:193-208. (IHC-P)

Description: FOXA1 is a transcriptional activator that is required for tissue-specific differentiation during embryonic development. It also functions as a coactivator with nuclear hormone receptors, including ESR1, and has been shown to play a major role in driving estrogen receptor positive breast cancers.