

Alexa Fluor® 700 anti-human IL-8

Catalog # / 3157085 / 25 tests
Size: 3157090 / 100 tests

Clone: E8N1

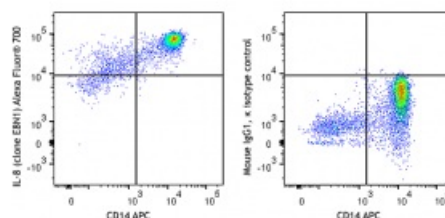
Isotype: Mouse IgG1, κ

Reactivity: Human

Preparation: The antibody was purified by affinity chromatography and conjugated with Alexa Fluor® 700 under optimal conditions.

Formulation: Phosphate-buffered solution, pH 7.2, containing 0.09% sodium azide and 0.2% (w/v) BSA (origin USA)

Concentration: Lot-specific



LPS stimulated (6hrs) and monensin treated human peripheral blood monocytes surface stained with CD14 APC and intracellularly stained with IL-8 (clone E8N1) Alexa Fluor® 700 (left) or mouse IgG1, κ isotype control (right).

Applications:

Applications: Intracellular Staining for Flow Cytometry

Recommended Usage: Each lot of this antibody is quality control tested by intracellular immunofluorescent staining with flow cytometric analysis. For flow cytometric staining, the suggested use of this reagent is 5 µL per million cells in 100 µL staining volume or 5 µL per 100 µL of whole blood. It is recommended that the reagent be titrated for optimal performance for each application.

* Alexa Fluor® 700 has a maximum emission of 719 nm when it is excited at 633 nm / 635 nm. Prior to using Alexa Fluor® 700 conjugate for flow cytometric analysis, please verify your flow cytometer's capability of exciting and detecting the fluorochrome.

Application Notes: **ELISA Detection:** The biotinylated E8N1 antibody is useful as the detection antibody in a sandwich ELISA assay, when used in conjunction with the purified H8A5 antibody as the capture antibody.

Description: IL-8, also known as neutrophil chemotactic factor, neutrophil activating protein, and monocyte-derived neutrophil chemotactic factor, is a member of the alpha (C-X-C) subfamily of chemokines called CXCL8. In response to proinflammatory stimuli, IL-8 is produced by monocytes, macrophages, T cells, neutrophils, and fibroblasts. IL-8 promotes neutrophil chemotaxis and degranulation. The 72 amino acid IL-8 is the predominant form secreted by monocytes and lymphocytes. The E8N1 antibody recognizes the human IL-8 protein and has been shown to be useful for intracellular immunofluorescence flow cytometric analysis and as ELISA detection antibody.

- Antigen** 1. Fitzgerald K, *et al.* Eds. 2001. The Cytokine FactsBook. Academic Press
References: San Diego.
2. Baggiolini M, *et al.* 1994. *Adv. Immunol.* 55:97.
3. Schröder J, *et al.* 1992. *Immunology Ser.* 57:387.
4. Zwahlen R, *et al.* 1993. *Intl. Rev. Expt. Pathol.* 34:27.