

RBC Lysis/Fixation Solution (10X)

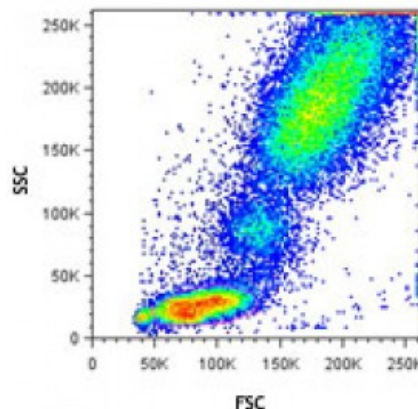
Catalog # / Size: 2712005 / 50 ml

Isotype:

Preparation: The pH of the 1X solution should fall within the range of pH 7.1 - 7.4. Adjust the pH if necessary. Warm the 1X solution to room temperature prior to use.

Formulation: This RBC Lysis/Fixation Solution is supplied as a 10X solution and should be diluted to 1X in room temperature deionized water.

Concentration: NULL



Human peripheral blood cells were stained with anti-human CD3 PerCP/Cy5.5 and anti-human CD4 FITC; red blood cells were lysed with BioLegend RBC Lysis/Fixation Solution.

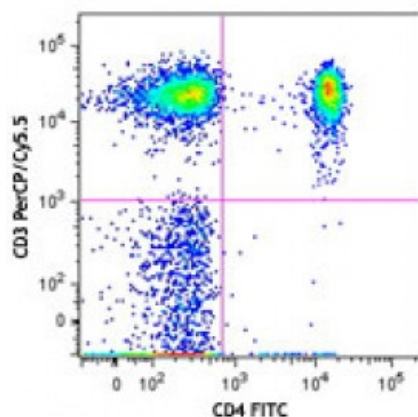
Applications:

Applications: Flow Cytometry

Recommended

Usage: Whole Blood Lyse/Wash Procedure:

1. Prepare 1X RBC Lysis/Fixation solution by diluting 1 part of RBC Lysis/Fixation solution with 9 parts of **room temperature** dl H₂O.
2. Mix 100 microL of whole blood with fluorochrome-conjugated antibody.
3. Incubate at room temperature, in the dark, for 20 minutes.
4. Add 2.0 mL 1X RBC Lysis/Fixation solution, gently mixing each tube immediately.
5. Incubate at room temperature, in the dark, for 15 minutes.
6. Centrifuge at 350Xg for five minutes. Discard supernatant.
7. Add 2 mL Cell Staining Buffer (Cat No 420201).
8. Centrifuge at 350Xg for five minutes. Discard supernatant.
9. Resuspend cell pellet in 0.3-0.5 mL Cell Staining Buffer.
10. Analyze cells immediately by flow cytometry or store at 4°C, in the dark, for no longer than 12 hours.



Whole Blood Lyse/No Wash Procedure:

1. Prepare 1X RBC Lysis/Fixation solution by diluting 1 part of RBC Lysis/Fixation solution with 9 parts **room temperature** dI H₂O.
2. Mix 50 microL of whole blood with fluorochrome-conjugated antibody.
3. Incubate at room temperature, in the dark, for 20 minutes.
4. Add 0.45 mL 1X RBC Lysis/Fixation solution, gently mixing each tube immediately.
5. Incubate at room temperature, in the dark, for 15 minutes.
6. Analyze samples by flow cytometry.

Application Notes: The 1X Lysis/Fixation solution can be used within 1 month from the date of preparation. It can be stored at room temperature or between 2°C and 8°C.

Application References: 1. Horvath P, *et al.* 2012. *J Infect Dis.* [PubMed](#)
2. Kusner LL, *et al.* 2014. *PLoS One.* 9:102231. [PubMed](#)

Description: RBC Lysis/Fixation Solution has been designed and optimized for one-step lysing of red blood cells (RBCs) and fixation of the remaining blood elements (such as leukocytes) following immunofluorescent staining with fluorochrome-conjugated antibodies. It can be used for either lyse/wash or lyse/no wash immunofluorescent staining procedures. This solution is supplied as a 10X concentrate. Dilute to 1X working solution with room temperature dI H₂O prior to use.