

PE/Cy7 anti-human IgG Fc

Catalog # / Size: 2653610 / 100 tests
2653605 / 25 tests

Clone: M1310G05

Isotype: Rat IgG2a, κ

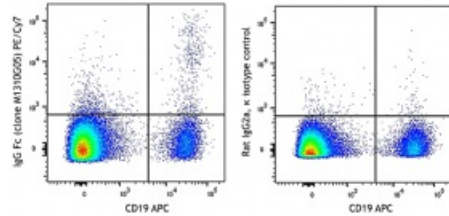
Immunogen: Human Siglec-E-IgG Fc fusion protein.

Reactivity: Human

Preparation: The antibody was purified by affinity chromatography and conjugated with PE/Cy7 under optimal conditions. The solution is free of unconjugated PE/Cy7 and unconjugated antibody.

Formulation: Phosphate-buffered solution, pH 7.2, containing 0.09% sodium azide and 0.2% (w/v) BSA (origin USA).

Concentration: Lot-specific



Human peripheral blood lymphocytes were stained with CD19 BV421 and IgG (clone M1310G05) PE/Cy7 (left) or Rat IgG2a, κ PE/Cy7 isotype control (right).

Applications:

Applications: Flow Cytometry

Recommended Usage: Each lot of this antibody is quality control tested by immunofluorescent staining with flow cytometric analysis. For flow cytometric staining, the suggested use of this reagent is 5 μl per million cells or 5 μl per 100 μl of whole blood. It is recommended that the reagent be titrated for optimal performance for each application.

Application Notes: Clone M1310G05 recognizes IgG in the membrane of memory B cells, has a stronger affinity for IgG1 and IgG3 than for IgG2 and IgG4, and does not cross react with IgD, IgE, or IgM.

Application References: 1. Paul, WE. (2003). *Fundamental Immunology*. Philadelphia, PA: Lippincott, Williams, & Wilkins.

Description: IgG Fc is a homodimer that is composed of the constant region of the two heavy chains that form the IgG molecule. The Fc fragment mediates opsonization, antibody dependent cellular cytotoxicity (ADCC), and complement activation through binding to Fc receptors such as CD16, CD32, CD64, and the complement factor C1.

Antigen References: 1. Paul, WE. (2003). *Fundamental Immunology*. Philadelphia, PA: Lippincott, Williams, & Wilkins.