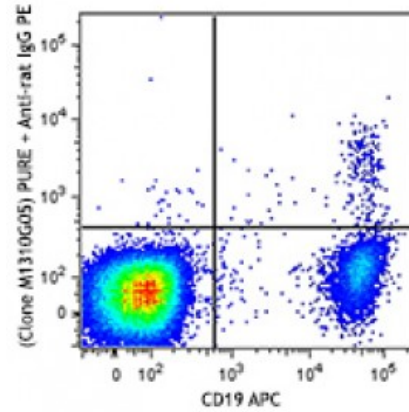


Purified anti-human IgG Fc

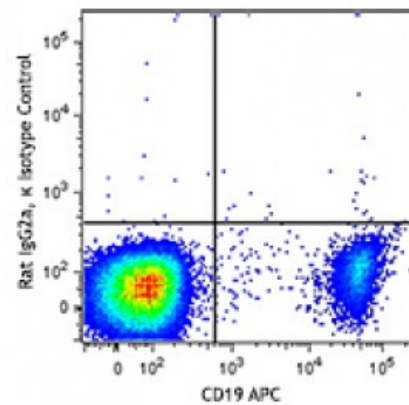
Catalog # / Size: 2653505 / 100 µg
Clone: M1310G05
Isotype: Rat IgG2a, κ
Immunogen: Human Siglec-E-IgG Fc fusion protein.
Reactivity: Human
Preparation: The antibody was purified by affinity chromatography.
Formulation: Phosphate-buffered solution, pH 7.2, containing 0.09% sodium azide.
Concentration: 0.5



Human peripheral blood lymphocytes were stained with CD19 APC and purified anti-human IgG Fc (clone M1310G05) (top) or purified rat IgG2a, κ isotype control (bottom), followed by anti-rat IgG PE.

Applications:

Applications: Other
Recommended Usage: Each lot of this antibody is quality control tested by immunofluorescent staining with flow cytometric analysis. For flow cytometric staining, the suggested use of this reagent is ≤0.5 microg per million cells in 100 microL volume. It is recommended that the reagent be titrated for optimal performance for each application.
Application Notes: Clone M1310G05 recognizes IgG in the membrane of memory B cells, has a stronger affinity for IgG1 and IgG3 than for IgG2 and IgG4, and does not cross react with IgD, IgE, or IgM.



Description: IgG Fc is a homodimer that is composed of the constant region of the two heavy chains that form the IgG molecule. The Fc fragment mediates opsonization, antibody dependent cellular cytotoxicity (ADCC), and complement activation through binding to Fc receptors such as CD16, CD32, CD64, and the complement factor C1.

Antigen References: 1. Paul, WE. (2003). *Fundamental Immunology*. Philadelphia, PA: Lippincott, Williams, & Wilkins.