

APC/Cy7 anti-mouse Ig light chain κ

Catalog # / Size: 2647520 / 100 μg
2647515 / 25 μg

Clone: RMK-45

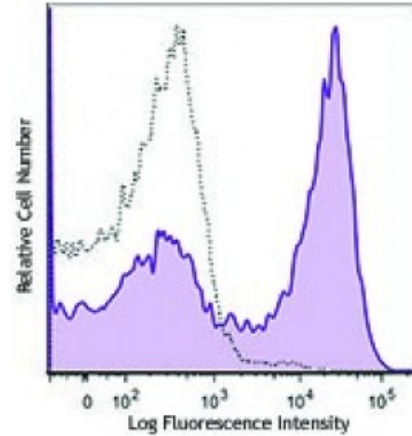
Isotype: Rat IgG

Reactivity: Mouse

Preparation: The antibody was purified by affinity chromatography and conjugated with APC/Cy7 under optimal conditions. The solution is free of unconjugated APC/Cy7 and unconjugated antibody.

Formulation: Phosphate-buffered solution, pH 7.2, containing 0.09% sodium azide.

Concentration: NULL



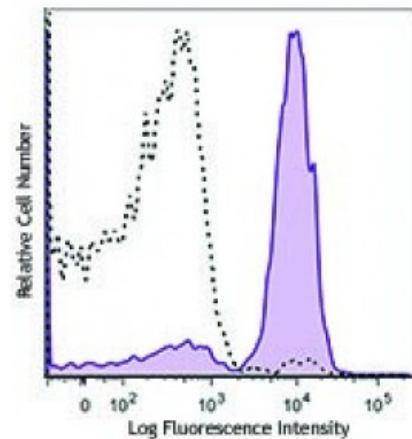
C57BL/6 splenocytes were stained with anti-mouse Ig light chain κ (clone RMK-45) APC/Cy7 (filled histogram) or rat IgG1, κ APC/Cy7 isotype control (open histogram).

Applications:

Applications: Flow Cytometry

Recommended Usage: Each lot of this antibody is quality control tested by immunofluorescent staining with flow cytometric analysis. For flow cytometric staining, the suggested use of this reagent is ≤0.25 microg per million cells in 100 microL volume. It is recommended that the reagent be titrated for optimal performance for each application.

Application Notes: The RMK-12 monoclonal antibody may be used as a primary antibody for ELISA or as secondary for detection of mouse Ig κ.



Human peripheral blood lymphocytes were stained with (filled histogram) or without (open histogram) purified mouse IgG1, κ anti-human CD3 (clone UCHT1) followed by anti-mouse Ig light chain κ (clone RMK-45) APC/Cy7.

Description: The RMK-45 monoclonal antibody reacts with immunoglobulin light chain κ in all tested mouse haplotype (Igh-a and b). It does not react with the λ chain.

- Antigen**
- References:**
1. Ludwig TE, et al. 2006. *Nat. Methods.* 3:637.
 2. Nguyen DH, et al. 2005. *J. Immunol.* 175:228.
 3. Bardor M, et al. 2005. *J. Biol. Chem.* 280:4228.
 4. Diaz SL, et al. 2009. *PLoS One.* 4:e4241