

PE anti-Biotin

Catalog # / Size: 2645015 / 25 µg
2645020 / 100 µg

Clone: 1D4-C5

Isotype: Mouse IgG2a, κ

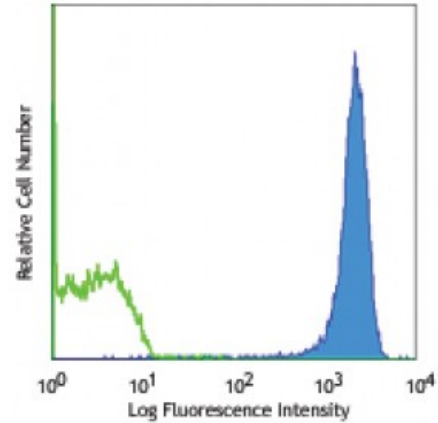
Immunogen: Biotinylated limulus hemocyanin

Reactivity: Human, Mouse, Non-human primate, Other, Rat

Preparation: The antibody was purified by affinity chromatography and conjugated with PE under optimal conditions. The solution is free of unconjugated PE and unconjugated antibody.

Formulation: Phosphate-buffered solution, pH 7.2, containing 0.09% sodium azide.

Concentration: 0.2



C57BL/6 thymocytes stained with biotinylated CD4 (GK1.5), followed by 1D4-C5 PE

Applications:

Applications: Flow Cytometry

Recommended Usage: Each lot of this antibody is quality control tested by immunofluorescent staining with flow cytometric analysis. For flow cytometric staining, the suggested use of this reagent is ≤0.06 microg per million cells in 100 microL volume. It is recommended that the reagent be titrated for optimal performance for each application.

Application Notes: Additional reported applications (for relevant formats) include: immunoprecipitation and ELISA.

Application References: 1. Uccellini MB, *et al.* 2008. *J. Immunol.* 181:5875.
2. Chan WK, *et al.* 2014. *Leukemia.* [PubMed](#)

Description: Biotin (vitamin B7 or vitamin H) is essential for cell growth and the metabolization of fat and protein. It is also often used to tag a molecule of interest. The anti-biotin antibody can be used as a second-step reagent for detecting biotinylated targets.