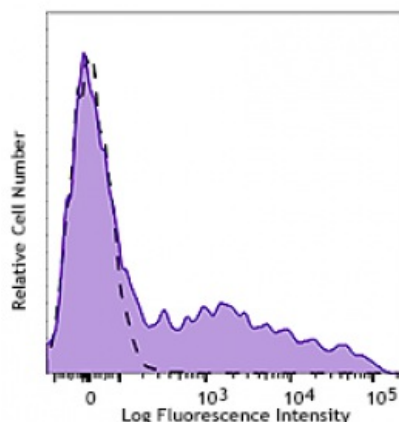


## Alexa Fluor® 647 anti-rat IgM

<b>Catalog # / Size:</b>	2644550 / 100 µg 2644545 / 25 µg
<b>Clone:</b>	MRM-47
<b>Isotype:</b>	Mouse IgG
<b>Immunogen:</b>	Mixed rat Igs
<b>Reactivity:</b>	Rat
<b>Preparation:</b>	The antibody was purified by affinity chromatography and conjugated with Alexa Fluor® 647 under optimal conditions. The solution is free of unconjugated Alexa Fluor® 647.
<b>Formulation:</b>	Phosphate-buffered solution, pH 7.2, containing 0.09% sodium azide.
<b>Concentration:</b>	0.5 mg/ml



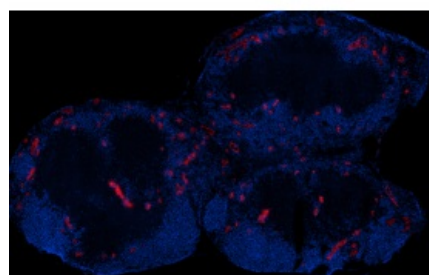
Lewis rat splenocytes were stained with rat IgM(clone MRM-47) Alexa Fluor® 647(filled histogram), or rat IgM isotype control(open histogram).

## Applications:

<b>Applications:</b>	Flow Cytometry, Immunohistochemistry
<b>Recommended Usage:</b>	Each lot of this antibody is quality control tested by immunofluorescent staining with flow cytometric analysis.

For flow cytometric staining, the suggested use of this reagent is  $\leq 0.5$  µg per million cells in 100 µl volume. For immunohistochemistry on frozen tissue, a concentration range of 2.5 - 10.0 µg/ml is suggested. It is recommended that the reagent be titrated for optimal performance for each application.

\* Alexa Fluor® 647 has a maximum emission of 668 nm when it is excited at 633 nm / 635 nm.



C57BL/6 mouse frozen lymph node section was fixed with 4% paraformaldehyde (PFA) for 10 minutes at room temperature and blocked with 5% FBS for 30 minutes at room temperature. Then the section was stained with 10 µg/ml of Purified PNA (clone MECA-79).

<b>Description:</b>	The MRM-47 monoclonal antibody reacts with rat immunoglobulin M (IgM) in all tested rat strains (Lou, Lou/Ws1/M, Lewis, Wistar, DA, Sprague-Dawley). It does not react with other isotypes. The MRM-47 antibody can be used as a primary or secondary reagent for ELISA or immunofluorescent analysis.
---------------------	--