

**APC anti-mouse IgMa**

**Catalog # / Size:** 2643065 / 25 µg  
2643070 / 100 µg

**Clone:** MA-69

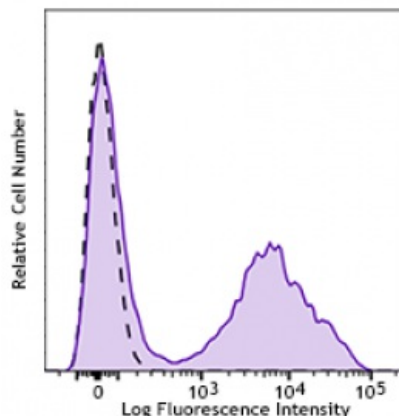
**Isotype:** Mouse IgG2a, κ

**Reactivity:** Mouse

**Preparation:** The antibody was purified by affinity chromatography and conjugated with APC under optimal conditions. The solution is free of unconjugated APC and unconjugated antibody.

**Formulation:** Phosphate-buffered solution, pH 7.2, containing 0.09% sodium azide.

**Concentration:** 0.2 mg/ml



BALB/c mouse splenocytes were stained with APC IgMa (clone MA-69, closed histogram) or APC mouse IgG1, κ isotype control (open histogram).

**Applications:**

**Applications:** Flow Cytometry

**Recommended Usage:** Each lot of this antibody is quality control tested by immunofluorescent staining with flow cytometric analysis. For flow cytometric staining, the suggested use of this reagent is ≤0.25 µg per million cells in 100 µl volume. It is recommended that the reagent be titrated for optimal performance for each application.

**Application Notes:** Additional reported applications (for the relevant formats) include: ELISA as capture antibody or detection antibody, stimulation of B cell proliferation, and immunohistochemistry of acetone-fixed frozen sections.

**Description:** This antibody was raised by immunization with IgM<sup>a</sup> mAb TC31. It specifically reacts with mouse IgM of *Igh-C<sup>a</sup>* and the related haplotypes (c, f, g, h, and j). It has been reported that beads coated with MA-69 antibody can stimulate B cell proliferation.