

PE/Cy7 anti-mouse IgMa

Catalog # / Size: 2643045 / 25 µg
2643050 / 100 µg

Clone: MA-69

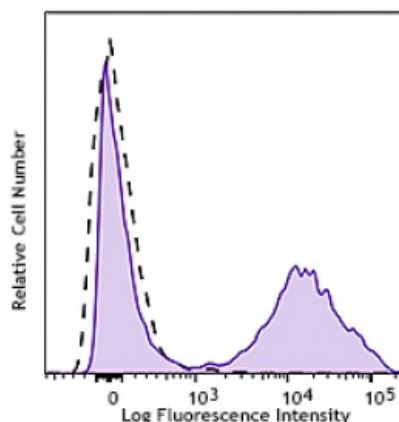
Isotype: Mouse IgG2a, κ

Reactivity: Mouse

Preparation: The antibody was purified by affinity chromatography and conjugated with PE/Cy7 under optimal conditions. The solution is free of unconjugated PE/Cy7 and unconjugated antibody.

Formulation: Phosphate-buffered solution, pH 7.2, containing 0.09% sodium azide.

Concentration: 0.2 mg/ml



BALB/c mouse splenocytes were stained with PE/Cy7 IgM^a (Clone MA-69, closed histogram) or PE/Cy7 mouse IgG1, κ Isotype control (open histogram).

Applications:

Applications: Flow Cytometry

Recommended Usage: Each lot of this antibody is quality control tested by immunofluorescent staining with flow cytometric analysis. For flow cytometric staining, the suggested use of this reagent is ≤ 0.25 µg per million cells in 100 µl volume. It is recommended that the reagent be titrated for optimal performance for each application.

Application Notes: Additional reported applications (for the relevant formats) include: ELISA as capture antibody or detection antibody, stimulation of B cell proliferation, and immunohistochemistry of acetone-fixed frozen sections.

Description: This antibody was raised by immunization with IgM^a mAb TC31. It specifically reacts with mouse IgM of *Igh-C^a* and the related haplotypes (c, f, g, h, and j). It has been reported that beads coated with MA-69 antibody can stimulate B cell proliferation.