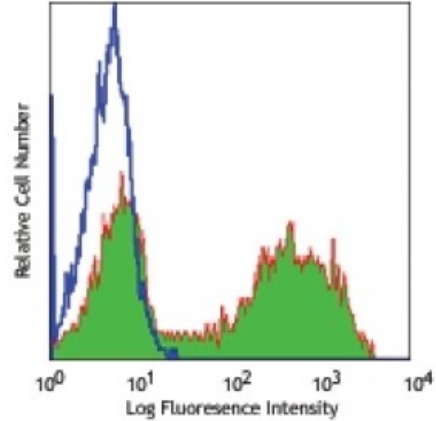


FITC anti-mouse IgMa

Catalog # / Size: 2643030 / 500 µg
Clone: MA-69
Isotype: Mouse IgG1, κ
Reactivity: Mouse
Preparation: The antibody was purified by affinity chromatography, and conjugated with FITC under optimal conditions. The solution is free of unconjugated FITC.
Formulation: Phosphate-buffered solution, pH 7.2, containing 0.09% sodium azide.
Concentration: 0.5

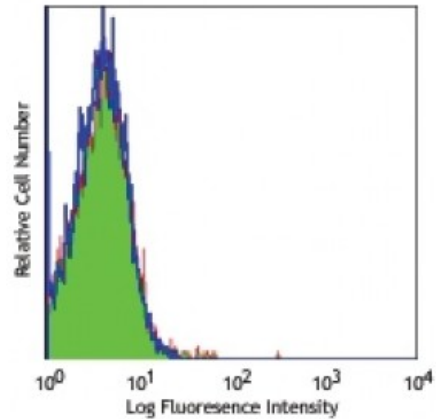


Balb/c (upper) and C57BL/6 (bottom) splenocytes stained with MA-69 FITC

Applications:

Applications: Flow Cytometry
Recommended Usage: Each lot of this antibody is quality control tested by immunofluorescent staining with flow cytometric analysis. For flow cytometric staining, the suggested use of this reagent is ≤ 0.25 microg per 10⁶ cells in 100 microL volume. It is recommended that the reagent be titrated for optimal performance for each application.

Application Notes: Additional reported applications (for the relevant formats) include: ELISA as capture antibody or detection antibody, stimulation of B cell proliferation, and immunohistochemistry of acetone-fixed frozen sections.



- Application References:**
1. Sieckmann D, *et al.* 1991. *Hybridoma* 10:121.
 2. Stall AM. 1996. Weir's Handbook of Experimental Immunology pp. 27.

Description: This antibody was raised by immunization with IgM^a mAb TC31. It specifically reacts with mouse IgM of *Igh-C^a* and the related haplotypes (c, f, g, h, and j). It has been reported that beads coated with MA-69 antibody can stimulate B cell proliferation.