

## APC anti-FITC

**Catalog # /** 2641545 / 25 µg  
**Size:** 2641550 / 100 µg

**Clone:** FIT-22

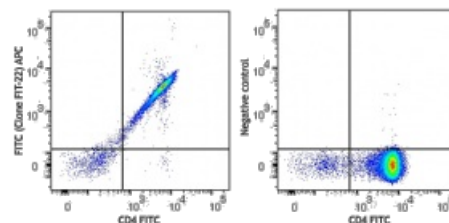
**Isotype:** Mouse IgG1, λ

**Immunogen:** FITC conjugated mouse IgG.

**Preparation:** The antibody was purified by affinity chromatography and conjugated with APC under optimal conditions. The solution is free of unconjugated APC and unconjugated antibody.

**Formulation:** Phosphate-buffered solution, pH 7.2, containing 0.09% sodium azide.

**Concentration:** 0.2 mg/ml



C57BL/6 thymocytes stained with anti-CD4 (clone RM4-5) FITC only (right) or CD4 FITC plus APC anti-FITC/CD4 (left).

## Applications:

**Applications:** Flow Cytometry

**Recommended Usage:** Each lot of this antibody is quality control tested by immunofluorescent staining with flow cytometric analysis. For flow cytometric staining, the suggested use of this reagent is ≤0.5 µg per million cells in 100 µl volume. It is recommended that the reagent be titrated for optimal performance for each application.

**Description:** The FIT-22 antibody reacts with both fluorescein isothiocyanate (FITC) alone and FITC conjugated with antibody or streptavidin. When FIT-22 antibody is used in a three-step staining procedure or separation of FITC-antibody labeled cells, it does not quench FITC fluorescence or react with tested mouse and human cells. The FIT-22 antibody can be used for separation of FITC-antibody labeled cells or as a secondary step to amplify FITC conjugated primary antibody signals (i.e. biotinylated FIT-22 as secondary step, followed by Streptavidin-FITC).