

Purified anti-FITC

Catalog # / Size: 2641510 / 500 µg
2641505 / 50 µg

Clone: FIT-22

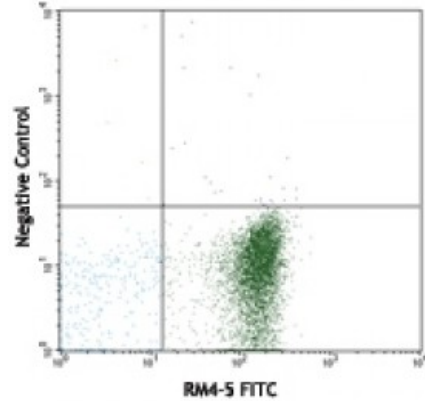
Isotype: Mouse IgG1, λ

Immunogen: FITC conjugated mouse IgG.

Preparation: The antibody was purified by affinity chromatography.

Formulation: Phosphate-buffered solution, pH 7.2, containing 0.09% sodium azide.

Concentration: 0.5

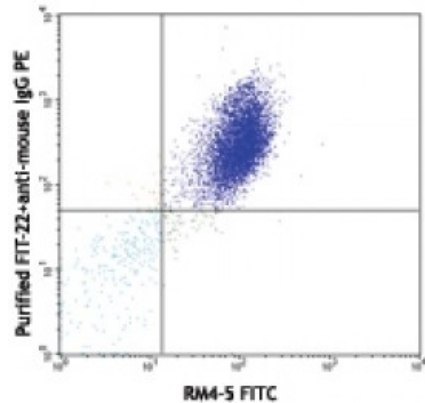


C57BL/6 thymocytes stained with RM4-5 FITC only (top) or RM4-5 FITC plus purified FIT-22 (bottom), then detected with anti-mouse IgG PE

Applications:

Applications: Flow Cytometry

Recommended Usage: Each lot of this antibody is quality control tested. For flow cytometric staining, the suggested use of this reagent is ≤0.5 microg per million cells in 100 microl volume. It is recommended that the reagent be titrated for optimal performance for each application.



Description: The FIT-22 antibody reacts with both fluorescein isothiocyanate (FITC) alone and FITC conjugated with antibody or streptavidin. When FIT-22 antibody is used in a three-step staining procedure or separation of FITC-antibody labeled cells, it does not quench FITC fluorescence or react with tested mouse and human cells. The FIT-22 antibody can be used for separation of FITC-antibody labeled cells or as a secondary step to amplify FITC conjugated primary antibody signals (i.e. biotinylated FIT-22 as secondary step, followed by Streptavidin-FITC).