

PE anti-rat IgG2b

Catalog # / Size: 2641070 / 500 µg
2641065 / 50 µg

Clone: MRG2b-85

Isotype: Mouse IgG1, κ

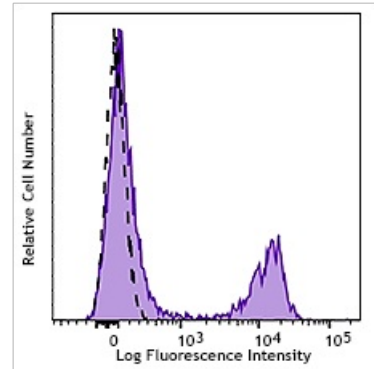
Immunogen: mixed rat Igs

Reactivity: Rat

Preparation: The antibody was purified by affinity chromatography and conjugated with PE under optimal conditions. The solution is free of unconjugated PE and unconjugated antibody.

Formulation: Phosphate-buffered solution, pH 7.2, containing 0.09% sodium azide.

Concentration: 0.2 mg/ml



C57BL/6 splenocytes stained with purified anti-mouse CD3 (clone 17A2, filled histogram) or mouse IgG1, κ isotype control (clone MOPC-21, open histogram), followed by anti-rat IgG2b (clone MRG2b-85) PE.

Applications:

Applications: Flow Cytometry

Recommended Usage: Each lot of this antibody is quality control tested by immunofluorescent staining with flow cytometric analysis. For flow cytometric staining, the suggested use of this reagent is ≤ 0.25 µg per million cells in 100 µl volume. It is recommended that the reagent be titrated for optimal performance for each application.

Description: The MRG2b-85 monoclonal antibody reacts with rat immunoglobulin G2b (IgG2b) in all tested rat strains (Lou, Lou/Ws1/M, Lewis, Wistar, DA, Sprague-Dawley). The MRG2b-85 monoclonal antibody may be used as primary or secondary reagent for ELISA or immunofluorescent analysis.