

APC anti-phycoerythrin (PE)

Catalog # / Size: 2640540 / 100 µg
2640535 / 25 µg

Clone: PE001

Isotype: Mouse IgG1, κ

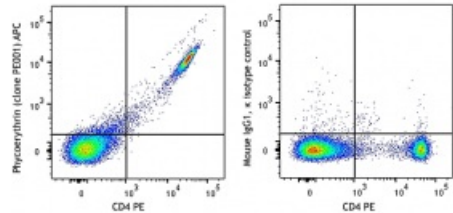
Immunogen: Phycoerythrin

Reactivity: 2nd Step

Preparation: The antibody was purified by affinity chromatography and conjugated with APC under optimal conditions. The solution is free of unconjugated APC and unconjugated antibody.

Formulation: Phosphate-buffered solution, pH 7.2, containing 0.09% sodium azide.

Concentration: 0.2 mg/ml



C57BL/6 thymocytes stained with CD4 PE and anti-phycoerythrin (left) APC or mouse IgG1, κ isotype control (right) APC.

Applications:

Applications: Flow Cytometry

Recommended Usage: Each lot of this antibody is quality control tested by immunofluorescent staining with flow cytometric analysis. For flow cytometric staining, the suggested use of this reagent is ≤ 0.5 µg per million cells in 100 µl volume. It is recommended that the reagent be titrated for optimal performance for each application.

Application References: 1. Taylor RT, *et al.* 2007. *J. Immunol.* 178:5659.

Description: The PE001 antibody reacts with both phycoerythrin (PE) alone and PE conjugated with antibody or streptavidin, as well as PE tandem dyes such as PE/Cy5, PE/Cy5.5 and PE/Cy7. When PE001 antibody is used in a three-step staining procedure or separation of PE-antibody labeled cells, it does not quench PE fluorescence or react with tested mouse and human cells. The PE001 antibody can be used for separation of PE-antibody labeled cells or as a secondary step to amplify PE conjugated primary antibody signals (i.e. biotinylated PE001 as secondary step, followed by Streptavidin-PE).