

PE anti-rat Ig light chain κ

Catalog # / Size: 2639030 / 200 μ g
2639025 / 50 μ g

Clone: MRK-81

Isotype: Mouse IgG

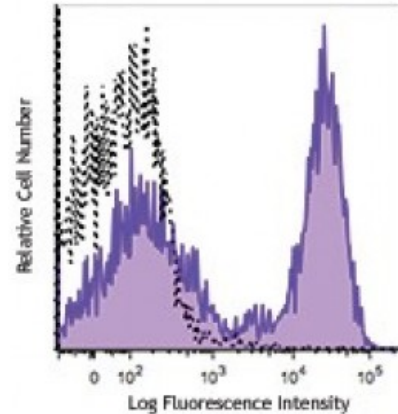
Immunogen: Mixed rat Igs

Reactivity: Rat

Preparation: The antibody was purified by affinity chromatography and conjugated with PE under optimal conditions. The solution is free of unconjugated PE and unconjugated antibody.

Formulation: Phosphate-buffered solution, pH 7.2, containing 0.09% sodium azide.

Concentration: 0.2



Rat splenocytes were stained with anti-rat Ig light chain κ (clone MRK-81) PE.

Applications:

Applications: Flow Cytometry

Recommended Usage: Each lot of this antibody is quality control tested by immunofluorescent staining with flow cytometric analysis. For flow cytometric staining, the suggested use of this reagent is ≤ 0.03 microg per million cells in 100 microL volume. It is recommended that the reagent be titrated for optimal performance for each application.

Description: The MRK-81 monoclonal antibody reacts with rat immunoglobulin light chain κ in all tested rat strains (Lou, Lou/Ws1/M, Lewis, Wistar, DA, Sprague-Dawley). It does not react with λ chain. The MRK-81 monoclonal antibody may be used as primary or secondary reagent for ELISA or immunofluorescence analysis.