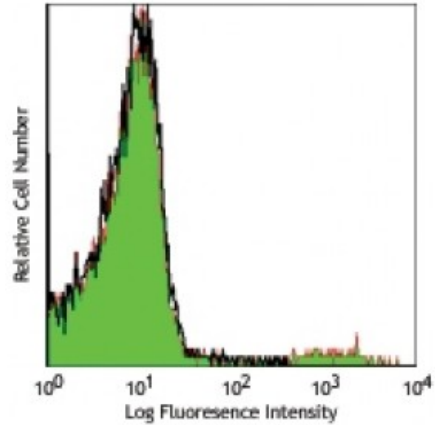


**APC anti-mouse Ig light chain  $\lambda$** 

**Catalog # / Size:** 2636530 / 100  $\mu$ g  
**Clone:** RML-42  
**Isotype:** Rat IgG2a,  $\kappa$   
**Immunogen:** Mouse Ig cocktail  
**Reactivity:** Mouse  
**Preparation:** The antibody was purified by affinity chromatography, and conjugated with APC under optimal conditions. The solution is free of unconjugated APC and unconjugated antibody.  
**Formulation:** Phosphate-buffered solution, pH 7.2, containing 0.09% sodium azide.  
**Concentration:** 0.2



C57BL/6 mouse splenocytes stained with RML-42 APC

**Applications:**

**Applications:** Flow Cytometry  
**Recommended Usage:** Each lot of this antibody is quality control tested by immunofluorescent staining with flow cytometric analysis. For flow cytometric staining, the suggested use of this reagent is  $\leq 0.25$  microg per million cells in 100 microL volume. It is recommended that the reagent be titrated for optimal performance for each application.  
**Application References:** 1. Ota M, *et al.* 2010. *J. Immunol.* 185:4128. [PubMed](#)  
2. Xu Z, *et al.* 2012. *J. Immunol.* 189:4470. [PubMed](#)

**Description:** The RML-42 monoclonal antibody reacts with immunoglobulin light chain  $\lambda$  in all tested mouse haplotype (Igh-a and b). It does not react with  $\kappa$  chain. The RML-42 monoclonal antibody may be used as primary or secondary reagent for ELISA or immunofluorescent analysis.