

**APC/Fire™ 750 anti-mouse IgG2a**

**Catalog # / Size:** 2635620 / 100 µg  
2635615 / 25 µg

**Clone:** RMG2a-62

**Isotype:** Rat IgG

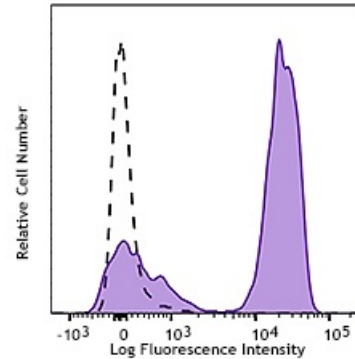
**Immunogen:** Mouse Ig cocktail

**Reactivity:** Mouse

**Preparation:** The antibody was purified by affinity chromatography and conjugated with APC/Fire™ 750 under optimal conditions.

**Formulation:** Phosphate-buffered solution, pH 7.2, containing 0.09% sodium azide.

**Concentration:** 0.2 mg/ml



Human peripheral blood lymphocytes were stained with purified anti-human CD3 (clone HIT3a isotype mouse IgG2a, κ) followed by APC/Fire™ 750 anti-mouse IgG2a Antibody (filled histogram) or APC/Fire™ 750 anti-mouse IgG2a Antibody alone (open histogram).

**Applications:**

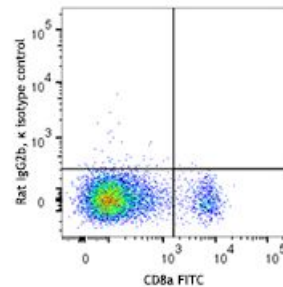
**Applications:** Flow Cytometry

**Recommended Usage:** Each lot of this antibody is quality control tested by immunofluorescent staining with flow cytometric analysis. For flow cytometric staining, the suggested use of this reagent is ≤ 0.25 µg per million cells in 100 µl volume. It is recommended that the reagent be titrated for optimal performance for each application.

\* APC/Fire™ 750 has a maximum excitation of 650 nm and a maximum emission of 787 nm.

**Application Notes:** S18020H has been tested to block the ligand binding of SCF on c-kit which is determined by the phosphorylation of ERK1/2 in c-kit signaling.

**Application References:** 1. Gavin AL, et al. 2006. *Science* 314:1936.  
2. Podolin PL, et al. 2008. *J. Immunol.* 180:7989. (IP) [PubMed](#)



**Description:** The RMG2a-62 monoclonal antibody reacts with immunoglobulin G2a and G2c (IgG2a, IgG2c) and in all tested mouse haplotype (Igh-a and b). It does not react with other isotypes. The RMG1-1 monoclonal antibody may be used as primary or secondary reagent for ELISA or immunofluorescent analysis.

**Antigen**  
**References:**

1. Ledbetter JA, et al. 1979. *Immunol. Rev.* 47:63. (IHC, IP)
2. Hathcock KS. 1991. *Current Protocols in Immunology.* 3.4.1. (Deplete)
3. Takahashi K, et al. 1992. *P. Natl. Acad. Sci. USA* 89:5557. (Block, IP)
4. Ledbetter JA, et al. 1981. *J. Exp. Med.* 153:1503. (Block)
5. Hata H, et al. 2004. *J. Clin. Invest.* 114:582. (IHC)
6. Fan WY, et al. 2001. *Exp. Biol. Med.* 226:1045. (IHC)
7. Shih FF, et al. 2006. *J. Immunol.* 176:3438. (FC)
8. Kamimura D, et al. 2006. *J. Immunol.* 177:306.
9. Bouwer HGA, et al. 2006. *P. Natl. Acad. Sci. USA* 103:5102. (FC, Deplete)
10. Kao C, et al. 2005. *Int. Immunol.* 17:1607. PubMed
11. Ko SY, et al. 2005. *J. Immunol.* 175:3309. (FC) PubMed
12. Rasmussen JW, et al. 2006. *Infect. Immun.* 74:6590