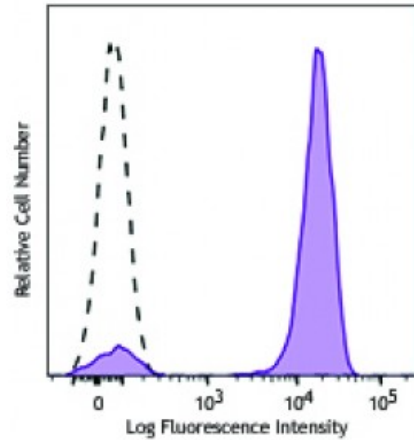


**Brilliant Violet 421™ anti-mouse IgG2a**

**Catalog # / Size:** 2635585 / 50 µg  
**Clone:** RMG2a-62  
**Isotype:** Rat IgG  
**Reactivity:** Mouse  
**Preparation:** The antibody was purified by affinity chromatography and conjugated with PE/Cy7 under optimal conditions. The solution is free of unconjugated PE/Cy7 and unconjugated antibody.  
**Formulation:** Phosphate-buffered solution, pH 7.2, containing 0.09% sodium azide and 0.2% (w/v) BSA (origin USA).  
**Concentration:** Lot-specific



Human peripheral blood lymphocytes were stained with purified CD3 (clone HIT3a, filled histogram) or mouse IgG2a, κ isotype control (open histogram), followed by anti-mouse IgG2a (clone RMG2a-62) Brilliant Violet 421™.

**Applications:**

**Applications:** Flow Cytometry  
**Recommended Usage:** Each lot of this antibody is quality control tested by immunofluorescent staining with flow cytometric analysis. For flow cytometric staining, the suggested use of this reagent is ≤0.125 microg per million cells in 100 microL volume. It is recommended that the reagent be titrated for optimal performance for each application.

Brilliant Violet 421™ excites at 405 nm and emits at 421 nm. The standard bandpass filter 450/50 nm is recommended for detection. Brilliant Violet 421™ is a trademark of Sirigen Group Ltd.

**Application References:** 1. Rojas RE, *et al.* 2005. *J. Infect. Dis.* 192:1806.  
 2. Correia DV, *et al.* 2011. *Blood* 118:992. (FC) [PubMed](#)

**Description:** The RMG2a-62 monoclonal antibody reacts with immunoglobulin G2a (IgG2a) in all tested mouse haplotypes (Igh-a and b). It does not react with other isotypes. The RMG1-1 monoclonal antibody may be used as primary or secondary reagent for ELISA or immunofluorescent analysis.

**Antigen References:** 1. Scotet E, *et al.* 2005. *Immunity* 22:71.  
 2. Rincon-Orozco B, *et al.* 2005. *J. Immunol.* 175:2144.