

APC anti-mouse IgG2a

Catalog # / Size: 2635545 / 25 µg
2635550 / 100 µg

Clone: RMG2a-62

Isotype: Rat IgG

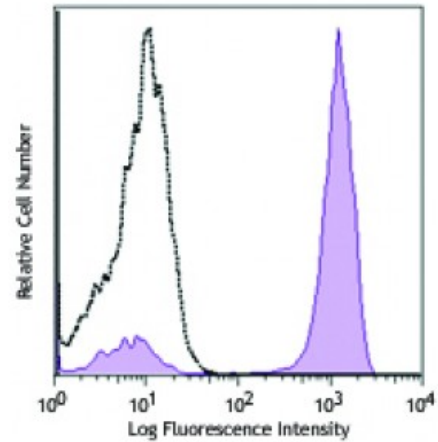
Immunogen: Mouse Ig cocktail

Reactivity: Mouse

Preparation: The antibody was purified by affinity chromatography and conjugated with APC under optimal conditions. The solution is free of unconjugated APC and unconjugated antibody.

Formulation: Phosphate-buffered solution, pH 7.2, containing 0.09% sodium azide.

Concentration: 0.2



Human peripheral blood lymphocytes were stained with (filled histogram) or without (open histogram) mouse IgG2a anti-human CD3 (clone HIT3a), followed by anti-mouse IgG2a (clone RMG2A-62) APC.

Applications:

Applications: Flow Cytometry

Recommended Usage: Each lot of this antibody is quality control tested by immunofluorescent staining with flow cytometric analysis. For flow cytometric staining, the suggested use of this reagent is ≤ 0.5 microg per million cells in 100 microL volume. It is recommended that the reagent be titrated for optimal performance for each application.

Application References: 1. Gavin AL, *et al.* 2006. *Science* 314:1936.
2. Podolin PL, *et al.* 2008. *J. Immunol.* 180:7989. (IP) [PubMed](#)

Description: The RMG2a-62 monoclonal antibody reacts with immunoglobulin G2a (IgG2a) in all tested mouse haplotype (Igh-a and b). It does not react with other isotypes. The RMG1-1 monoclonal antibody may be used as primary or secondary reagent for ELISA or immunofluorescent analysis.