

APC anti-mouse IgG2b

Catalog # / 2633560 / 100 µg
Size: 2633555 / 25 µg

Clone: RMG2b-1

Isotype: Rat IgG1, κ

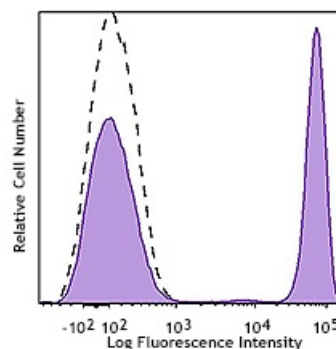
Immunogen: Mouse Ig cocktail

Reactivity: Mouse

Preparation: The antibody was purified by affinity chromatography and conjugated with APC under optimal conditions. The solution is free of unconjugated APC and unconjugated antibody.

Formulation: Phosphate-buffered solution, pH 7.2, containing 0.09% sodium azide.

Concentration: 0.2 mg/ml



Human peripheral blood lymphocytes were stained with purified anti-human CD4 (clone OKT4, filled histogram) or purified mouse IgG2b, κ isotype control (open histogram), followed by anti-mouse IgG2b (clone RMG2b-1) APC.

Applications:

Applications: Flow Cytometry

Recommended Usage: Each lot of this antibody is quality control tested by immunofluorescent staining with flow cytometric analysis. For flow cytometric staining, the suggested use of this reagent is ≤0.25 µg per million cells in 100 µl volume. It is recommended that the reagent be titrated for optimal performance for each application.

Description: The RMG2b-1 monoclonal antibody reacts with immunoglobulin G2b (IgG2b) in all tested mouse haplotypes (Igh-a and b). It does not react with other isotypes. The RMG2b-1 monoclonal antibody may be used as primary or secondary reagent for ELISA or immunofluorescent analysis.