

**Purified anti-mouse IgG2b**

**Catalog # / Size:** 2633505 / 50 µg  
2633510 / 500 µg

**Clone:** RMG2b-1

**Isotype:** Rat IgG1, κ

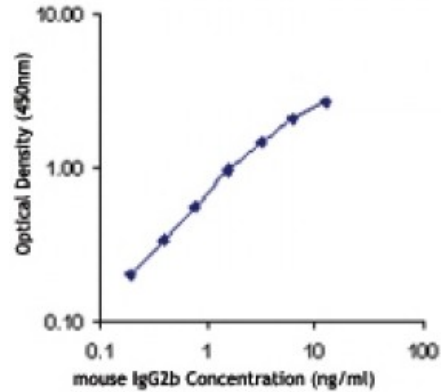
**Immunogen:** Mouse Ig cocktail

**Reactivity:** Mouse

**Preparation:** The antibody was purified by affinity chromatography.

**Formulation:** Phosphate-buffered solution, pH 7.2, containing 0.09% sodium azide.

**Concentration:** 0.5

**Applications:**

**Applications:** Other

**Recommended Usage:** Each lot of this antibody is quality control tested by ELISA. For ELISA capture, the suggested use of this reagent is  $\leq 2.0$  microg per ml. It's recommended that the reagent be titrated for optimal performance for each application.

---

**Description:** The RMG2b-1 monoclonal antibody reacts with immunoglobulin G2b (IgG2b) in all tested mouse haplotypes (Igh-a and b). It does not react with other isotypes. The RMG2b-1 monoclonal antibody may be used as primary or secondary reagent for ELISA or immunofluorescent analysis.