

APC/Fire™ 750 anti-mouse IgG1

Catalog # / 2633120 / 100 µg
Size: 2633115 / 25 µg

Clone: RMG1-1

Isotype: Rat IgG

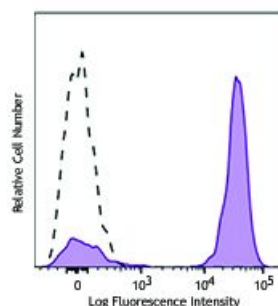
Immunogen: Mouse Ig cocktail

Reactivity: Mouse

Preparation: The antibody was purified by affinity chromatography and conjugated with APC/Fire™ 750 under optimal conditions.

Formulation: Phosphate-buffered solution, pH 7.2, containing 0.09% sodium azide.

Concentration: 0.2 mg/ml



Human peripheral blood lymphocytes were stained with purified anti-human CD3 (clone UCHT1 isotype mouse IgG1, κ) followed by APC/Fire™ 750 anti-mouse IgG1 antibody (filled histogram) or APC/Fire™ 750 anti-mouse IgG1 antibody alone (open histogram).

Applications:

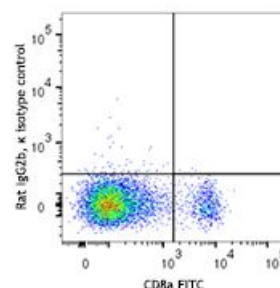
Applications: Flow Cytometry

Recommended Usage: Each lot of this antibody is quality control tested. For flow cytometric staining, the suggested use of this reagent is ≤0.125 µg per million cells in 100 µl volume. It is recommended that the reagent be titrated for optimal performance for each application.

* APC/Fire™ 750 has a maximum excitation of 650 nm and a maximum emission of 787 nm.

Application Notes: S18020H has been tested to block the ligand binding of SCF on c-kit which is determined by the phosphorylation of ERK1/2 in c-kit signaling.

Application References: 1. Rucci F, et al. 2010. *P. Natl. Acad. Sci. USA* 107:3024. (FC) [PubMed](#)
 2. Zhang JG, et al. 2011. *Int. Immunopharmacol.* 11:1685. [PubMed](#)



Description: The RMG1-1 monoclonal antibody reacts with immunoglobulin G1 (IgG1) in all tested mouse haplotype (Igh-a and b). It does not react with other isotypes. The RMG1-1 monoclonal antibody may be used as a primary or secondary reagent for ELISA or immunofluorescent analysis.

Antigen
References:

1. Ledbetter JA, et al. 1979. *Immunol. Rev.* 47:63. (IHC, IP)
2. Hathcock KS. 1991. *Current Protocols in Immunology*. 3.4.1. (Deplete)
3. Takahashi K, et al. 1992. *P. Natl. Acad. Sci. USA* 89:5557. (Block, IP)
4. Ledbetter JA, et al. 1981. *J. Exp. Med.* 153:1503. (Block)
5. Hata H, et al. 2004. *J. Clin. Invest.* 114:582. (IHC)
6. Fan WY, et al. 2001. *Exp. Biol. Med.* 226:1045. (IHC)
7. Shih FF, et al. 2006. *J. Immunol.* 176:3438. (FC)
8. Kamimura D, et al. 2006. *J. Immunol.* 177:306.
9. Bouwer HGA, et al. 2006. *P. Natl. Acad. Sci. USA* 103:5102. (FC, Deplete)
10. Kao C, et al. 2005. *Int. Immunol.* 17:1607. PubMed
11. Ko SY, et al. 2005. *J. Immunol.* 175:3309. (FC) PubMed
12. Rasmussen JW, et al. 2006. *Infect. Immun.* 74:6590