

**PE/Cy7 anti-mouse IgG1**

**Catalog # / Size:** 2633070 / 100 µg  
2633065 / 25 µg

**Clone:** RMG1-1

**Isotype:** Rat IgG

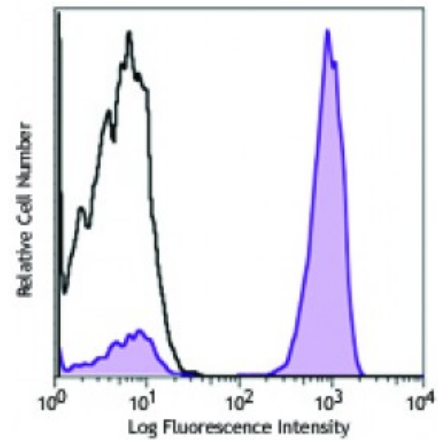
**Immunogen:** Mouse Ig cocktail

**Reactivity:** Mouse

**Preparation:** The antibody was purified by affinity chromatography and conjugated with PE/Cy7 under optimal conditions. The solution is free of unconjugated PE/Cy7 and unconjugated antibody.

**Formulation:** Phosphate-buffered solution, pH 7.2, containing 0.09% sodium azide.

**Concentration:** 0.2



Human peripheral blood lymphocytes were stained with purified anti-human CD3 (clone UCHT1, filled histogram) or mouse IgG1, κ isotype control (open histogram), followed by anti-mouse IgG1 (clone RMG1-1) PE/Cy7.

**Applications:**

**Applications:** Flow Cytometry

**Recommended Usage:** Each lot of this antibody is quality control tested by immunofluorescent staining with flow cytometric analysis. For flow cytometric staining, the suggested use of this reagent is ≤0.5 microg per million cells in 100 microL volume. It is recommended that the reagent be titrated for optimal performance for each application.

**Application References:** 1. Rucci F, *et al.* 2010. *P. Natl. Acad. Sci. USA* 107:3024. (FC) [PubMed](#)  
2. Zhang JG, *et al.* 2011. *Int. Immunopharmacol.* 11:1685. [PubMed](#)

**Description:** The RMG1-1 monoclonal antibody reacts with immunoglobulin G1 (IgG1) in all tested mouse haplotype (Igh-a and b). It does not react with other isotypes. The RMG1-1 monoclonal antibody may be used as a primary or secondary reagent for ELISA or immunofluorescent analysis.