

PE/Cyanine5 anti-mouse IgM

Catalog # / Size: 2632720 / 100 µg
2632715 / 25 µg

Clone: RMM-1

Isotype: Rat IgG2a, κ

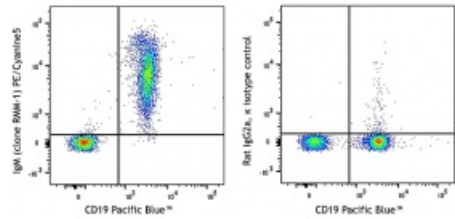
Immunogen: Mouse Ig cocktail

Reactivity: Mouse

Preparation: The antibody was purified by affinity chromatography and conjugated with PE/Cyanine5 under optimal conditions.

Formulation: Phosphate-buffered solution, pH 7.2, containing 0.09% sodium azide

Concentration: 0.2 mg/mL



C57BL/6 splenocytes were stained with CD19 Pacific Blue™ and anti-mouse IgM (clone RMM-1) PE/Cyanine5 (left) or rat IgG2a, κ PE/Cyanine5 isotype control (right).

Applications:

Applications: Flow Cytometry

Recommended Usage: Each lot of this antibody is quality control tested by immunofluorescent staining with flow cytometric analysis. For flow cytometric staining, the suggested use of this reagent is ≤ 0.5 µg per million cells in 100 µL volume. It is recommended that the reagent be titrated for optimal performance for each application.

Application Notes: The RMM-1 antibody reacts with both soluble and membrane immunoglobulin M in all tested mouse haplotypes (Igh-a and b). It does not react with other isotypes. Some formats of the RMM-1 antibody may be used as primary or secondary reagent for immunofluorescent staining or ELISA analysis.

Application References: 1. Tertilt C, et al. 2009. *Infect. Immun.* 77:3044. (ELISA) [PubMed](#)

Description: IgM is the first immunoglobulin made by B cells in the immune response. Surface IgM is expressed on the majority of mature B cells.