

**PE/Cyanine5 anti-mouse IgM**

**Catalog # / Size:** 2632715 / 25 µg

**Clone:** RMM-1

**Isotype:** Rat IgG2a, κ

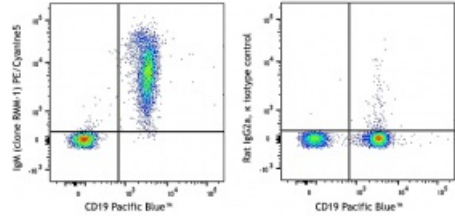
**Immunogen:** Mouse Ig cocktail

**Reactivity:** Mouse

**Preparation:** The antibody was purified by affinity chromatography and conjugated with PE/Cyanine5 under optimal conditions.

**Formulation:** Phosphate-buffered solution, pH 7.2, containing 0.09% sodium azide

**Concentration:** 0.2 mg/mL



C57BL/6 splenocytes were stained with CD19 Pacific Blue™ and anti-mouse IgM (clone RMM-1) PE/Cyanine5 (left) or rat IgG2a, κ PE/Cyanine5 isotype control (right).

**Applications:**

**Applications:** Flow Cytometry

**Recommended Usage:** Each lot of this antibody is quality control tested by immunofluorescent staining with flow cytometric analysis. For flow cytometric staining, the suggested use of this reagent is ≤ 0.5 µg per million cells in 100 µL volume. It is recommended that the reagent be titrated for optimal performance for each application.

**Application Notes:** The RMM-1 antibody reacts with both soluble and membrane immunoglobulin M in all tested mouse haplotypes (Igh-a and b). It does not react with other isotypes. Some formats of the RMM-1 antibody may be used as primary or secondary reagent for immunofluorescent staining or ELISA analysis.

**Application References:** 1. Tertilt C, et al. 2009. *Infect. Immun.* 77:3044. (ELISA) [PubMed](#)

**Description:** IgM is the first immunoglobulin made by B cells in the immune response. Surface IgM is expressed on the majority of mature B cells.