

**Brilliant Violet 711™ anti-mouse IgM**

**Catalog # / Size:** 2632695 / 50 µg

**Clone:** RMM-1

**Isotype:** Rat IgG2a, κ

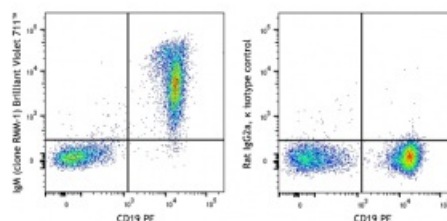
**Immunogen:** Mouse Ig cocktail

**Reactivity:** Mouse

**Preparation:** The antibody was purified by affinity chromatography and conjugated with Brilliant Violet 711™ under optimal conditions. The solution is free of unconjugated Brilliant Violet 711™ and unconjugated antibody.

**Formulation:** Phosphate-buffered solution, pH 7.2, containing 0.09% sodium azide and BSA (origin USA).

**Concentration:** 0.2 mg/ml



C57BL/6 splenocytes were stained with CD19 PE and anti-mouse IgM (clone RMM-1) Brilliant Violet 711™ (left) or rat IgG2a, κ Brilliant Violet 711™ isotype control (right).

**Applications:**

**Applications:** Flow Cytometry

**Recommended Usage:** Each lot of this antibody is quality control tested by immunofluorescent staining with flow cytometric analysis. For flow cytometric staining, the suggested use of this reagent is ≤0.5 µg per million cells in 100 µl volume. It is recommended that the reagent be titrated for optimal performance for each application.

Brilliant Violet 711™ excites at 405 nm and emits at 711 nm. The bandpass filter 710/50 nm is recommended for detection, although filter optimization may be required depending on other fluorophores used. Be sure to verify that your cytometer configuration and software setup are appropriate for detecting this channel. Refer to your instrument manual or manufacturer for support. Brilliant Violet 711™ is a trademark of Sirigen Group Ltd.

This product is subject to proprietary rights of Sirigen Inc. and is made and sold under license from Sirigen Inc. The purchase of this product conveys to the buyer a non-transferable right to use the purchased product for research purposes only. This product may not be resold or incorporated in any manner into another product for resale. Any use for therapeutics or diagnostics is strictly prohibited. This product is covered by U.S. Patent(s), pending patent applications and foreign equivalents.

**Application Notes:** The RMM-1 antibody reacts with both soluble and membrane immunoglobulin M in all tested mouse haplotypes (Igh-a and b). It does not react with other isotypes. Some formats of the RMM-1 antibody may be used as primary or secondary reagent for immunofluorescent staining or ELISA analysis.

**Application References:** 1. Tertilt C, et al. 2009. *Infect. Immun.* 77:3044. (ELISA) [PubMed](#)

**Description:** IgM is the first immunoglobulin made by B cells in the immune response. Surface IgM is expressed on the majority of mature B cells.