

**APC/Fire™ 750 anti-mouse IgM**

**Catalog # / Size:** 2632685 / 25 µg  
2632690 / 100 µg

**Clone:** RMM-1

**Isotype:** Rat IgG2a, κ

**Immunogen:** Mouse Ig cocktail

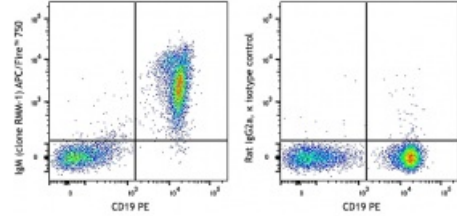
**Reactivity:** Mouse

**Preparation:** The antibody was purified by affinity chromatography and conjugated with APC/Fire™ 750 under optimal conditions.

**Formulation:** Phosphate-buffered solution, pH 7.2, containing 0.09% sodium azide.

**Workshop Number:** 750 under optimal conditions.

**Concentration:** 0.2 mg/ml

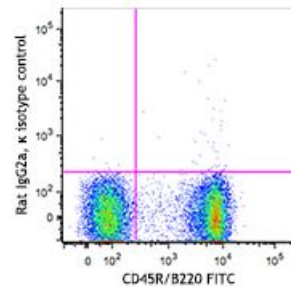


C57BL/6 splenocytes were stained with CD19 PE and anti-mouse IgM (clone RMM-1) APC/Fire™ 750 (left) or rat IgG2a, κ APC/Fire™ 750 isotype control (right).

**Applications:**

**Applications:** Flow Cytometry

**Recommended Usage:** Each lot of this antibody is quality control tested by immunofluorescent staining with flow cytometric analysis. For flow cytometric staining, the suggested use of this reagent is ≤ 1.0 µg per million cells in 100 µl volume. It is recommended that the reagent be titrated for optimal performance for each application.



\* APC/Fire™ 750 has a maximum excitation of 650 nm and a maximum emission of 787 nm.

**Application Notes:** The RMM-1 antibody reacts with both soluble and membrane immunoglobulin M in all tested mouse haplotypes (Igh-a and b). It does not react with other isotypes. Some formats of the RMM-1 antibody may be used as primary or secondary reagent for immunofluorescent staining or ELISA analysis.

**Application References:** 1. Tertilt C, et al. 2009. *Infect. Immun.* 77:3044. (ELISA) [PubMed](#)

**Description:** IgM is the first immunoglobulin made by B cells in the immune response. Surface IgM is expressed on the majority of mature B cells.

**Antigen**  
**References:**

1. Ledbetter JA, et al. 1979. *Immunol. Rev.* 47:63. (IHC, IP)
2. Hathcock KS. 1991. *Current Protocols in Immunology.* 3.4.1. (Deplete)
3. Takahashi K, et al. 1992. *P. Natl. Acad. Sci. USA* 89:5557. (Block, IP)
4. Ledbetter JA, et al. 1981. *J. Exp. Med.* 153:1503. (Block)
5. Hata H, et al. 2004. *J. Clin. Invest.* 114:582. (IHC)
6. Fan WY, et al. 2001. *Exp. Biol. Med.* 226:1045. (IHC)
7. Shih FF, et al. 2006. *J. Immunol.* 176:3438. (FC)
8. Kamimura D, et al. 2006. *J. Immunol.* 177:306.
9. Bouwer HGA, et al. 2006. *P. Natl. Acad. Sci. USA* 103:5102. (FC, Deplete)
10. Kao C, et al. 2005. *Int. Immunol.* 17:1607. PubMed
11. Ko SY, et al. 2005. *J. Immunol.* 175:3309. (FC) PubMed
12. Rasmussen JW, et al. 2006. *Infect. Immun.* 74:6590