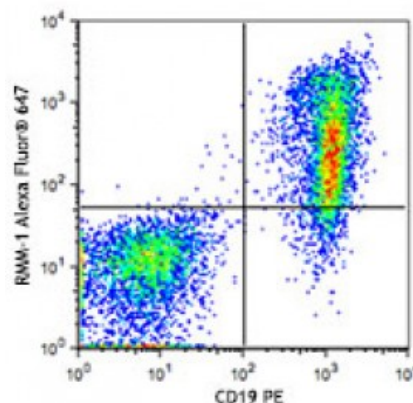


Alexa Fluor® 647 anti-mouse IgM

Catalog # / Size:	2632625 / 25 µg 2632630 / 100 µg
Clone:	RMM-1
Isotype:	Rat IgG2a, κ
Immunogen:	Mouse Ig cocktail
Reactivity:	Mouse
Preparation:	The antibody was purified by affinity chromatography and conjugated with Alexa Fluor® 647 under optimal conditions.
Formulation:	Phosphate-buffered solution, pH 7.2, containing 0.09% sodium azide and 0.2% (w/v) BSA (origin USA).
Concentration:	0.5



C57BL/6 splenocytes were stained with CD19 PE and anti-IgM (clone RMM-1) Alexa Fluor® 647.

Applications:

Applications: Flow Cytometry

Recommended Usage: Each lot of this antibody is quality control tested by immunofluorescent staining with flow cytometric analysis. For flow cytometric staining, the suggested use of this reagent is ≤0.5 microg per million cells in 100 microL volume. It is recommended that the reagent be titrated for optimal performance for each application.

* Alexa Fluor® 647 has a maximum emission of 668 nm when it is excited at 633 nm / 635 nm.

Application Notes: The RMM-1 antibody reacts with both soluble and membrane immunoglobulin M in all tested mouse haplotypes (Igh-a and b). It does not react with other isotypes. Some formats of the RMM-1 antibody may be used as primary or secondary reagent for immunofluorescent staining or ELISA analysis.

Application References: 1. Tertilt C, *et al.* 2009. *Infect. Immun.* 77:3044. (ELISA) [PubMed](#)

Description: IgM is the first immunoglobulin made by B cells in the immune response. Surface IgM is expressed on the majority of mature B cells.