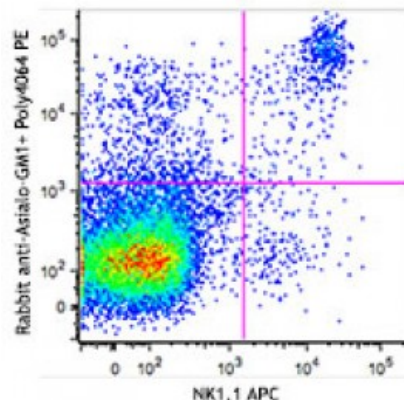


**PE Donkey anti-rabbit IgG (minimal x-reactivity)**

**Catalog # / Size:** 2632105 / 100 µg  
**Clone:** Poly4064  
**Isotype:** Donkey Polyclonal Ig  
**Reactivity:** Non-human primate  
**Preparation:** The antibody was purified by affinity chromatography and conjugated with PE under optimal conditions. The solution is free of unconjugated PE and unconjugated antibody.  
**Formulation:** Phosphate-buffered solution, pH 7.2, containing 0.09% sodium azide.  
**Concentration:** Lot-specific



C57BL/6 splenocytes were stained with NK-1.1 APC and purified rabbit anti-Asialo-GM1, followed by donkey anti-rabbit IgG (clone Poly4064) PE (top image).

**Applications:**

**Applications:** Flow Cytometry  
**Recommended Usage:** Each lot of this antibody is quality control tested by immunofluorescent staining with flow cytometric analysis. For flow cytometric staining, the suggested use of this reagent is ≤0.125 microg per million cells in 100 microL volume. It is recommended that the reagent be titrated for optimal performance for each application.  
**Application Notes:** This \_ conjugated polyclonal donkey anti-rabbit IgG antibody is useful for immunofluorescent staining for flow cytometry, or microscopy.

**Description:** This polyclonal donkey anti-rabbit IgG antibody reacts with the heavy chains of rabbit IgG and with the light chains common to most rabbit immunoglobulins. No cross-reactivity has been detected against non-immunoglobulin serum proteins. This antibody has been solid-phase absorbed to ensure minimal cross-reaction with rat, human, bovine, horse, and mouse immunoglobulins, but it may cross-react with other subclasses of rabbit immunoglobulins.