

PE Syrian Hamster IgG Isotype Ctrl

Catalog # / Size:	2610040 / 100 µg
Clone:	SHG-1
Isotype:	Hamster IgG
Immunogen:	Trinitrophenol + KLH
Reactivity:	Other
Preparation:	The antibody was purified by affinity chromatography, and conjugated with PE under optimal conditions.
Formulation:	Phosphate-buffered solution, pH 7.2, containing 0.09% sodium azide.
Workshop Number:	750 under optimal conditions.
Concentration:	0.2

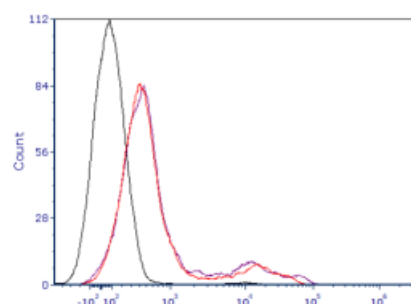
Applications:

Applications: Flow Cytometry, Intracellular Staining for Flow Cytometry

Recommended Usage: Each lot of this antibody is quality control tested by immunofluorescent staining with flow cytometric analysis as negative control. Use at concentrations comparable to those of the specific antibody of interest.

Application Notes: The SHG-1 immunoglobulin is useful as an isotype-matched control (for the relevant formats) for Western blotting, immunoprecipitation, immunohistochemistry, functional assay, and immunofluorescence microscopy. The LEAF™ purified antibody (Endotoxin <0.1 EU/µg, Azide-Free, 0.2 µm filtered) is recommended for functional assays as negative control.

Application References: 1. Nishimoto H, *et al.* 2005. *Blood*. 106:4241.



One day old C57BL/6 mouse splenocytes were stained with Zombie R718™ and analyzed before fixation (purple) or after fixation and permeabilization (red). Cells alone, without Zombie R718™ staining, are indicated in black.

Description: The SHG-1 immunoglobulin is of Syrian hamster IgG isotype and was chosen as an isotype control after screening on variety of resting, activated, live, and fixed mouse, rat and human tissues.

Antigen References: 1. Center D *et al.* 1996. *Immunol. Today* 17:476.
2. Gaubin M *et al.* 1996. *Eur. J. Clin. Chem. Clin. Biochem.* 34:723.