

## PerCP/Cy5.5 Mouse IgM, $\kappa$ Isotype Ctrl

**Catalog # / Size:** 2608115 / 25 tests  
2608120 / 100 tests

**Clone:** MM-30

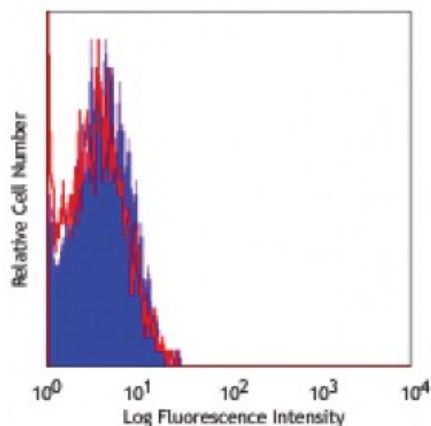
**Isotype:** Mouse IgM,  $\kappa$

**Immunogen:** Trinitrophenol + KLH

**Preparation:** The antibody was purified by affinity chromatography and conjugated with PerCP/Cy5.5 under optimal conditions. The solution is free of unconjugated PerCP/Cy5.5 and unconjugated antibody.

**Formulation:** Phosphate-buffered solution, pH 7.2, containing 0.09% sodium azide and 0.2% (w/v) BSA (origin USA).

**Concentration:** Lot-specific



Human peripheral blood lymphocytes stained with anti mouse IgM,  $\kappa$  (MM-30) PerCP/Cy5.5 isotype control

## Applications:

**Applications:** Flow Cytometry

**Recommended Usage:** Each lot of this mouse IgM,  $\kappa$  isotype control antibody is quality control tested by immunofluorescent staining with flow cytometric analysis. For flow cytometric staining, use the isotype control at the same concentration as your primary antibody. Use our [Concentration Lookup](#) tool to find the exact concentrations of your lots of product.

\* PerCP/Cy5.5 has a maximum absorption of 482 nm and a maximum emission of 690 nm.

**Application Notes:** The MM-30 immunoglobulin is useful as an isotype-matched control (for the relevant formats) for Western blotting, immunoprecipitation, immunohistochemistry, functional assay, and immunofluorescence microscopy. The LEAF™ purified antibody (Endotoxin <0.1 EU/μg, Azide-Free, 0.2 μm filtered) is recommended for functional assays (Cat. No. 401604) as negative control.

**Application References:** 1. Ameres S, *et al.* 2014. *J Immunol.* 192:5894. [PubMed](#)

**Description:** The isotype of MM-30 immunoglobulin is mouse IgM,  $\kappa$ . This antibody was chosen as an isotype control after screening on a variety of resting, activated, live, and fixed mouse, rat and human tissues.