

KIRAVIA Blue 520™ Rat IgG1, κ isotype Ctrl

Catalog # / 2602320 / 100 µg
Size: 2602315 / 25 µg

Clone: RTK2071

Isotype: Rat IgG1, κ

Immunogen: Trinitrophenol + KLH

Preparation: The antibody was purified by affinity chromatography and conjugated with KIRAVIA Blue 520™ under optimal conditions.

Formulation: Phosphate-buffered solution, pH 7.2, containing 0.09% sodium azide

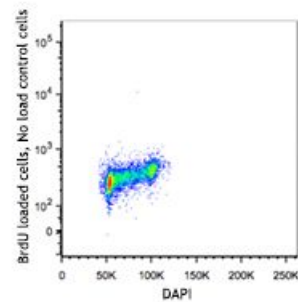
Workshop Number: 750 under optimal conditions.

Concentration: 0.2

Applications:

Applications: Flow Cytometry

Recommended Usage: Each lot of this antibody is quality control tested by immunofluorescent staining with flow cytometric analysis. For flow cytometric staining, the suggested use of this reagent is ≤ 1.0 µg per million cells in 100 µL volume. It is recommended that the reagent be titrated for optimal performance for each application.



* KIRAVIA Blue 520™ has an excitation maximum of 495 nm, and a maximum emission of 520 nm.

Application Notes: The RTK2071 immunoglobulin is useful as an isotype-matched control (for the relevant formats) for Western blotting, immunoprecipitation, immunohistochemistry, functional assay, and immunofluorescence microscopy.

Application References: 1. Riemann M, *et al.* 2005. *J. Immunol.* 175:3560. [PubMed](#)
 2. Wondimu Z, *et al.* 2010. *Am. J. Pathol.* 177:2334. [PubMed](#)

Description: The isotype of RTK2071 immunoglobulin is rat IgG1, κ. This antibody was chosen as an isotype control after screening on a variety of resting, activated, live, and fixed mouse, rat and human tissues.

Antigen References: 1. Dundas CM, *et al.* 2013. *Appl. Microbiol. Biotechnol.* 97:9343.
 2. Zhao X, *et al.* 2013. *J. Anal. Methods Chem.* 2013:581093.
 3. Kaplan DL, *et al.* 1999. *Biomol. Eng.* 16:135.
 4. Wilbur DS, *et al.* 1999. *Biomol. Eng.* 16:113.
 5. Sano T, *et al.* 1998. *J. Chromatogr. B. Biomed. Sci. Appl.* 715:85.