

PE anti-human TGF-β Receptor II

Catalog # / Size: 2598515 / 25 tests

Clone: W17055E

Isotype: Rat IgG2b, κ

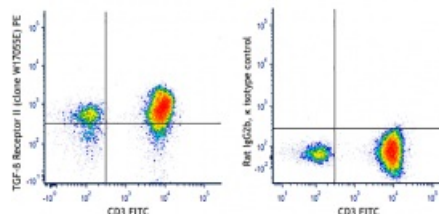
Immunogen: TGFβR2 protein (aa 1-243) expressing transfectants

Reactivity: Human

Preparation: The antibody was purified by affinity chromatography and conjugated with PE under optimal conditions.

Formulation: Phosphate-buffered solution, pH 7.2, containing 0.09% sodium azide and 0.2% (w/v) BSA (origin USA)

Concentration: Lot-specific



Human peripheral blood lymphocytes were stained with CD3 FITC and TGF-β receptor II (clone W17055E) PE (left) or rat IgG2b, κ PE isotype control (right).

Applications:

Applications: Flow Cytometry

Recommended Usage: Each lot of this antibody is quality control tested by immunofluorescent staining with flow cytometric analysis. For flow cytometric staining, the suggested use of this reagent is 5 μL per million cells in 100 μL staining volume or 5 μL per 100 μL of whole blood. It is recommended that the reagent be titrated for optimal performance for each application.

Description: Transforming growth factor beta receptor 2 (TGFβR2 or TGFβRII) forms a heterodimeric complex on the cell surface with TGFβR1. TGFβR2 binds TGF-beta and is important for cell proliferation, wound healing, immunosuppression, and tumorigenesis.

Antigen References:

1. Horbelt D, *et al.* 2010. *J Cell Sci.* 123:4340-50.
2. Wei CY, *et al.* 2015. *Int J Clin Exp Pathol.* 8:14619-29.
3. Numata S, *et al.* 2008. *J Psychiatr Res.* 42:425-32.