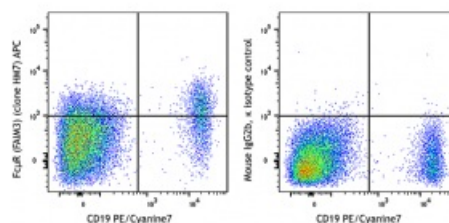


APC anti-human FcμR (FAIM3)

Catalog # /	2590520 / 100 tests
Size:	2590515 / 25 tests
Clone:	HM7
Isotype:	Mouse IgG2b, κ
Immunogen:	BW5147 cells expressing human FCMR protein
Reactivity:	Human
Preparation:	The antibody was purified by affinity chromatography and conjugated with APC under optimal conditions.
Formulation:	Phosphate-buffered solution, pH 7.2, containing 0.09% sodium azide and 0.2% (w/v) BSA (origin USA)
Workshop Number:	IV 103
Concentration:	Lot-specific



Human peripheral blood lymphocytes were stained with APC anti-human FcμR (clone HM7) (left) or mouse IgG2b, κ isotype ctrl (right) and PE/Cyanine7 CD19.

Applications:

Applications: Flow Cytometry

Recommended Usage: Each lot of this antibody is quality control tested by immunofluorescent staining with flow cytometric analysis. For flow cytometric staining, the suggested use of this reagent is 5 μL per million cells in 100 μL staining volume or 5 μL per 100 μL of whole blood. It is recommended that the reagent be titrated for optimal performance for each application.

Application Notes: It was reported that HM7 antibody can block binding of human IgM to FCMR.

Application References:

1. Kubagawa H, *et al.* 2009. *J Exp Med.* 206(12): 2779-93.
2. Kubagawa H, *et al.* 2014. *Monoclon Antib Immunodiagn Immunother.* 33(6): 393- 400.

Description: The human FCMR (also known as FcμR, FAIM, TOSO) is a type 1 transmembrane glycoprotein that belonging to the immunoglobulin (Ig) gene superfamily. FCMR had a molecular weight of about 60 kD. Human FCMR is predominantly expressed by B, T, and NK cells, but not by monocytes, granulocytes, erythrocytes, and platelets. FCMR may play roles in regulating humoral immune responses.

Antigen References:

1. Kubagawa H, *et al.* 2009. *J Exp Med.* 206(12): 2779-93.
2. Shima H, *et al.* 2010. *Int Immunol.* 22(3): 149-56.
3. Kubagawa H, *et al.* 2019. *Front Immunol.* 10:945.
4. Meryk A, *et al.* 2019. *Cell Rep.* 26(10): 2681-91.
5. Liu J, *et al.* 2019. *Front Immunol.* 10:529.