

Purified anti-human Keratan Sulfate (KS)

Catalog # / Size: 2588010 / 100 µg

Clone: R-10G

Isotype: Mouse IgG1, κ

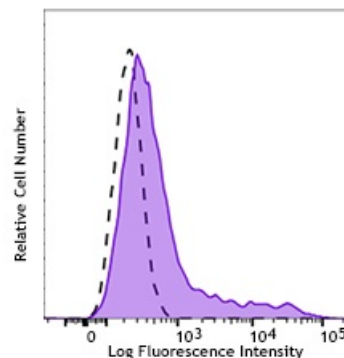
Immunogen: Tic cells

Reactivity: Human

Preparation: The antibody was purified by affinity chromatography.

Formulation: Phosphate-buffered solution, pH 7.2, containing 0.09% sodium azide.

Concentration: 0.5 mg/ml

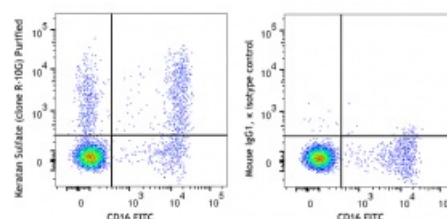


Human teratocarcinoma cell line, NCCIT, stained with purified anti-human keratan sulfate (clone R-10G, filled histogram) or purified Mouse IgG1, κ isotype control (open histogram), followed by anti-mouse IgG PE.

Applications:

Applications: Flow Cytometry, Neutralization

Recommended Usage: Each lot of this antibody is quality control tested by immunofluorescent staining with flow cytometric analysis. For flow cytometric staining, the suggested use of this reagent is ≤ 0.2 µg per million cells in 100 µl volume. It is recommended that the reagent be titrated for optimal performance for each application.



Human peripheral blood lymphocytes were stained with purified anti-human keratan sulfate (clone R-10G) (left) or purified mouse IgG1, κ isotype control (right), followed by anti-mouse IgG PE and CD16 FITC.

Description: Keratan Sulfate (KS) consists of a family of glycosaminoglycans (GAGs) that are abundantly present in the extracellular matrix and cell surface in certain tissues, such as the cornea and cartilage. Clone R-10G recognizes a unique form of podocalyxin-associated KS structures that are enriched on human induced pluripotent stem cells(hiPS) and human embryonic stem cells(hES). The epitope is also expressed in the adult human and mouse brain.

Antigen Kawabe K, *et al.* 2013. *Glycobiology*. 23:322.
References: Nakao H, *et al.* 2017. *Glycoconj. J.* 34:789.
Shogo M, *et al.* 2015. jbc.M115.657692.
Makanga JO, *et al.* 2015. *Biol Pharm Bull.* 38:127
Hiroaki T, *et al.* 2017. *Regen Ther.* 6:1-8