

## FITC anti-human CD38

**Catalog # /** 2586035 / 25 tests  
**Size:** 2586040 / 100 tests

**Clone:** S17015F

**Isotype:** Mouse IgG2a,  $\kappa$

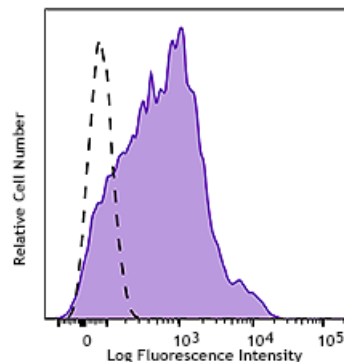
**Immunogen:** Human CD38 transfectants

**Reactivity:** Human

**Preparation:** The antibody was purified by affinity chromatography and conjugated with FITC under optimal conditions.

**Formulation:** Phosphate-buffered solution, pH 7.2, containing 0.09% sodium azide and 0.2% (w/v) BSA (origin USA)

**Concentration:** lot-specific



Human peripheral blood lymphocytes were stained with anti-human CD38 (clone S17015F) FITC (filled histogram) or mouse IgG2a,  $\kappa$  FITC isotype control (open histogram).

## Applications:

**Applications:** Flow Cytometry

**Recommended Usage:** Each lot of this antibody is quality control tested by immunofluorescent staining with flow cytometric analysis. For flow cytometric staining, the suggested use of this reagent is 5  $\mu$ L per million cells in 100  $\mu$ L staining volume or 5  $\mu$ L per 100  $\mu$ L of whole blood. It is recommended that the reagent be titrated for optimal performance for each application.

**Application Notes:** S17015F is able to cross-block binding of clones HIT2 and HB-7 also raised against human CD38, but not S17015A based on in-house testing.

**Description:** CD38 is a 45 kD type II transmembrane glycoprotein also known as T10. It is an ADP-ribosyl hydrolase expressed at variable levels on hematopoietic cells and in some non-hematopoietic tissues (such as brain, muscles, and kidney). In humans, it is expressed at high levels on plasma cells and activated T and B cells. By functioning as both a cyclase and a hydrolase, CD38 mediates lymphocyte activation, adhesion, and the metabolism of cADPR and NAADP. CD31 is the ligand of CD38.

**Antigen References:**

1. Ferrero E, *et al.* 1999. *J Leuko Biol.* 65:151.
2. Lund F, *et al.* 1995. *Immunol. Today* 16:469.