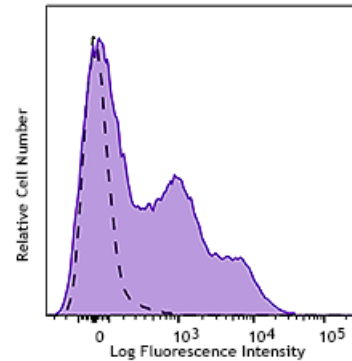


APC/Cyanine7 anti-human CD38

Catalog # / 2585585 / 25 tests
Size: 2585590 / 100 tests
Clone: S17015A
Isotype: Mouse IgG1, κ
Immunogen: Human CD38 transfectants
Reactivity: Human
Preparation: The antibody was purified by affinity chromatography and conjugated with APC/Cyanine7 under optimal conditions.
Formulation: Phosphate-buffered solution, pH 7.2, containing 0.09% sodium azide and 0.2% (w/v) BSA (origin USA)
Concentration: Lot-specific



Human peripheral lymphocytes were stained with anti-human CD38 (clone S17015A) APC/Cyanine7 (filled histogram) or mouse IgG1, κ APC/Cyanine7 isotype control (open histogram).

Applications:

Applications: Flow Cytometry

Recommended Usage: Each lot of this antibody is quality control tested by immunofluorescent staining with flow cytometric analysis. For flow cytometric staining, the suggested use of this reagent is 5 μ L per million cells in 100 μ L staining volume or 5 μ L per 100 μ L of whole blood. It is recommended that the reagent be titrated for optimal performance for each application.

Application Notes: S17015A does not cross-block binding of clones HIT2, HB-7 or S17015F also raised against human CD38 based on in-house testing.

Description: CD38 is a 45 kD type II transmembrane glycoprotein also known as T10. It is an ADP-ribosyl hydrolase expressed at variable levels on hematopoietic cells and in some non-hematopoietic tissues (such as brain, muscles, and kidney). In humans, it is expressed at high levels on plasma cells and activated T and B cells. By functioning as both a cyclase and a hydrolase, CD38 mediates lymphocyte activation, adhesion, and the metabolism of cADPR and NAADP. CD31 is the ligand of CD38.

Antigen References:

1. Ferrero E, *et al.* 1999. *J Leukoc Biol.* 65:151.
2. Lund F, *et al.* 1995. *Immunol Today.* 16:469.