

APC anti-human CD38

Catalog # / Size: 2585560 / 100 tests
2585555 / 25 tests

Clone: S17015A

Isotype: Mouse IgG1, κ

Immunogen: Human CD38 transfectants

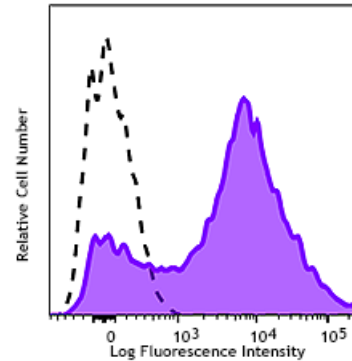
Reactivity: Human

Preparation: The antibody was purified by affinity chromatography and conjugated with APC under optimal conditions.

Formulation: Phosphate-buffered solution, pH 7.2, containing 0.09% sodium azide and 0.2% (w/v) BSA (origin USA)

Workshop Number: HCDM listed

Concentration: lot-specific



Human peripheral lymphocytes were stained with CD38 (clone S17015A) APC (filled histogram) or mouse IgG1, κ APC isotype control (open histogram).

Applications:

Applications: Flow Cytometry

Recommended Usage: Each lot of this antibody is quality control tested by immunofluorescent staining with flow cytometric analysis. For flow cytometric staining, the suggested use of this reagent is 5 μ L per million cells in 100 μ L staining volume or 5 μ L per 100 μ L of whole blood. It is recommended that the reagent be titrated for optimal performance for each application.

Application Notes: S17015A does not cross-block binding of clones HIT2, HB-7 or S17015F also raised against human CD38 based on in-house testing.

- Application References:**
1. Garlanda C, *et al.* 1997. *Eur. J. Cell Biol.* 73:368. (FC)
 2. Knowles HJ, *et al.* 2004. *Circ. Res.* 95:162. (IHC)
 3. Trempus CS, *et al.* 2003. *J. Invest. Dermatol.* 120:501.
 4. Winding B, *et al.* 2002. *Clin. Cancer Res.* 8:1932. (IHC)
 5. Voswinckel R, *et al.* 2003. *Circ. Res.* 93:372. (IHC)
 6. Kairaitis LK, *et al.* 2005. *Am. J. Physiol. Renal. Physiol.* 288:F198. (IHC, WB)
 7. Ao A, *et al.* 2008. *P. Natl. Acad. Sci. USA* 105:7821. [PubMed](#)
 8. Zaynagetdinov R., *et al.* 2011. *J Immunol.* 187:5703. [PubMed](#).

Description: CD38 is a 45 kD type II transmembrane glycoprotein also known as T10. It is an ADP-ribosyl hydrolase expressed at variable levels on hematopoietic cells and in some non-hematopoietic tissues (such as brain, muscles, and kidney). In humans, it is expressed at high levels on plasma cells and activated T and B cells. By functioning as both a cyclase and a hydrolase, CD38 mediates lymphocyte activation, adhesion, and the metabolism of cADPR and NAADP. CD31 is the ligand of CD38.

- Antigen References:**
1. Ferrero E, *et al.* 1999. *J Leukoc Biol.* 65:151.
 2. Lund F, *et al.* 1995. *Immunol Today.* 16:469.