

Alexa Fluor® 700 anti-human CD38

Catalog # / Size: 2585530 / 100 tests
2585525 / 25 tests

Clone: S17015A

Isotype: Mouse IgG1, κ

Immunogen: Human CD38 transfectants

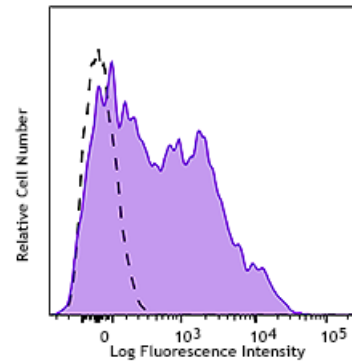
Reactivity: Human

Preparation: The antibody was purified by affinity chromatography and conjugated with Alexa Fluor® 700 under optimal conditions.

Formulation: Phosphate-buffered solution, pH 7.2, containing 0.09% sodium azide and 0.2% (w/v) BSA (origin USA)

Workshop Number: IV A053

Concentration: Lot-specific



Human peripheral blood lymphocytes were stained with anti-human CD38 (clone S17015A) Alexa Fluor® 700 (filled histogram) or mouse IgG1, κ Alexa Fluor® 700 isotype control (open histogram).

Applications:

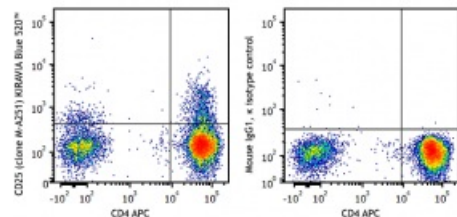
Applications: Flow Cytometry

Recommended Usage: Each lot of this antibody is quality control tested by immunofluorescent staining with flow cytometric analysis. For flow cytometric staining, the suggested use of this reagent is 5 µL per million cells in 100 µL staining volume or 5 µL per 100 µL of whole blood. It is recommended that the reagent be titrated for optimal performance for each application.

* Alexa Fluor® 700 has a maximum emission of 719 nm when it is excited at 633 nm / 635 nm. Prior to using Alexa Fluor® 700 conjugate for flow cytometric analysis, please verify your flow cytometer's capability of exciting and detecting the fluorochrome.

Application Notes: S17015A does not cross-block binding of clones HIT2, HB-7 or S17015F also raised against human CD38 based on in-house testing.

Application References: 1. Li H and Pauza CD. 2015. *Eur. J. Immunol.* 45:298. (IHC)



Human peripheral blood lymphocytes were stained with CD4 APC and CD25 (clone M-A251) KIRAVIA Blue 520™ (left) or mouse IgG1, κ KIRAVIA Blue 520™ isotype control (right).

Description: CD38 is a 45 kD type II transmembrane glycoprotein also known as T10. It is an ADP-ribosyl hydrolase expressed at variable levels on hematopoietic cells and in some non-hematopoietic tissues (such as brain, muscles, and kidney). In humans, it is expressed at high levels on plasma cells and activated T and B cells. By functioning as both a cyclase and a hydrolase, CD38 mediates lymphocyte activation, adhesion, and the metabolism of cADPR and NAADP. CD31 is the ligand of CD38.

Antigen 1. Ferrero E, *et al.* 1999. *J Leukoc Biol.* 65:151.
References: 2. Lund F, *et al.* 1995. *Immunol Today.* 16:469.