

PE anti-human CD210b (IL-10RB)

Catalog # / 2584020 / 100 tests

Size: 2584015 / 25 tests

Clone: S17009F

Isotype: Mouse IgG2a, κ

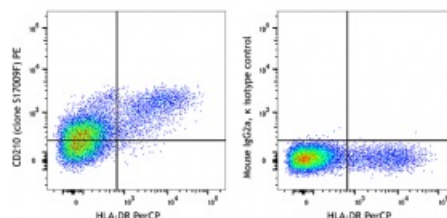
Immunogen: Human IL10RB-transfected cells

Reactivity: Human

Preparation: The antibody was purified by affinity chromatography and conjugated with PE under optimal conditions. The solution is free of unconjugated PE and unconjugated antibody.

Formulation: Phosphate-buffered solution, pH 7.2, containing 0.09% sodium azide and 0.2% (w/v) BSA (origin USA).

Concentration: Lot-specific



Human peripheral blood lymphocytes were stained with HLA-DR PerCP and CD210b (IL-10RB) (clone S17009F) PE (left) or mouse IgG2a, κ PE isotype control (right).

Applications:

Applications: Flow Cytometry

Recommended Usage: Each lot of this antibody is quality control tested by immunofluorescent staining with flow cytometric analysis. For flow cytometric staining, the suggested use of this reagent is 5 μ l per million cells in 100 μ l staining volume or 5 μ l per 100 μ l of whole blood.

Description: CD210b is a Type 1 transmembrane glycoprotein also known as, subunit 2 (IL-10R2) and is an essential chain for the IL-10 receptor complex. The IL-10 receptor complex is made up of alpha (IL10-RA) and beta (IL-10RB) subunits. Coexpression of these subunits has been shown to be required for IL10 induced signal transduction. Binding of dimeric IL-10 to two alpha subunits can cause the recruitment of two beta subunits resulting in the transduction of the intracellular JAK/STAT pathway.

Antigen References:

1. Donnelly RP, *et al.* 2004. *J Leukoc Biol.* 76(2):314-321.
2. Koppelman B, *et al.* 1997. *Immunity.* (6): 861-871
3. Kotenko SV, *et al.* 1997. *EMBO J.* 16(19):5894-5903.
4. Liu Y, *et al.* 1995. *J Immunol.* 152(4):1821-1829.