

**Purified anti-human CD210b (IL-10RB)**

**Catalog # / Size:** 2584010 / 100 µg

**Clone:** S17009F

**Isotype:** Mouse IgG2a, κ

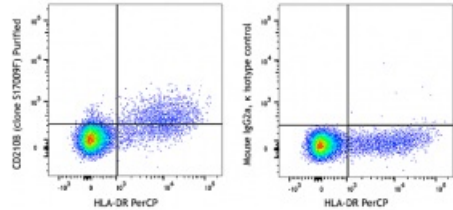
**Immunogen:** Human IL10RB-transfected cells

**Reactivity:** Human

**Preparation:** The antibody was purified by affinity chromatography.

**Formulation:** Phosphate-buffered solution, pH 7.2, containing 0.09% sodium azide.

**Concentration:** 0.5 mg/ml



Human peripheral blood lymphocytes were stained CD210b (IL-10RB) (clone S17009F) Purified (left) or Mouse IgG2a, κ isotype control Purified (right), followed by anti-mouse IgG2a PE and HLA-DR PerCP.

**Applications:**

**Applications:** Flow Cytometry

**Recommended Usage:** Each lot of this antibody is quality control tested by immunofluorescent staining with flow cytometric analysis. For flow cytometric staining, the suggested use of this reagent is 5 µl per million cells in 100 µl staining volume or 5 µl per 100 µl of whole blood.

**Description:** CD210b is a Type 1 transmembrane glycoprotein also known as, subunit 2 (IL-10R2) and is an essential chain for the IL-10 receptor complex. The IL-10 receptor complex is made up of alpha (IL10-RA) and beta (IL-10RB) subunits. Coexpression of these subunits has been shown to be required for IL10 induced signal transduction. Binding of dimeric IL-10 to two alpha subunits can cause the recruitment of two beta subunits resulting in the transduction of the intracellular JAK/STAT pathway.

- Antigen References:**
1. Donnelly RP, *et al.* 2004. *J Leukoc Biol.* 76(2):314-321.
  2. Koppelman B, *et al.* 1997. *Immunity.* (6): 861-871
  3. Kotenko SV, *et al.* 1997. *EMBO J.* 16(19):5894-5903.
  4. Liu Y, *et al.* 1995. *J Immunol.* 152(4):1821-1829.