

**Purified anti-human CD288 (TLR8)**

**Catalog # / Size:** 2577510 / 100 µg

**Clone:** S16018A

**Isotype:** Mouse IgG2a, κ

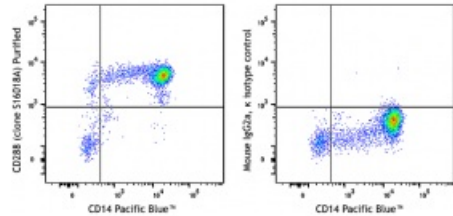
**Immunogen:** Human TLR8-transfected cells

**Reactivity:** Human

**Preparation:** The antibody was purified by affinity chromatography.

**Formulation:** Phosphate-buffered solution, pH 7.2, containing 0.09% sodium azide.

**Concentration:** 0.5 mg/ml



Human peripheral blood monocytes were stained with CD14 Pacific Blue™, treated with Fixation Buffer and Permeabilization Wash Buffer (Cat. No. 421002), and then stained with purified CD288 (clone S16018A, left) or purified mo

**Applications:**

**Applications:** Intracellular Flow Cytometry

**Recommended Usage:** Each lot of this antibody is quality control tested by intracellular immunofluorescent staining with flow cytometric analysis. For flow cytometric staining, the suggested use of this reagent is ≤ 0.5 µg per million cells in 100 µl volume. It is recommended that the reagent be titrated for optimal performance for each application.

**Application References:**

1. Lood C, *et al.* 2017. *J Exp Med.* 214:2103.
2. Prinz N, *et al.* 2011. *Blood.* 118:2322.
3. Gringhuis SI, *et al.* 2010. *Nat Immunol.* 11:1419.
4. Cros J, *et al.* 2010. *Immunity.* 33:375.
5. Peng G, *et al.* 2005. *Science.* 309:1380.

**Description:** Toll-like receptor (TLR) 8, also known as CD288, is a 83 kDa, type 1 transmembrane protein, member of the TLR receptor family. TLR8 is expressed intracellularly in monocytes, macrophages and myeloid dendritic cells, and plays an important role in the innate immune response by binding single-stranded RNA (ssRNA). TLR8 triggers anti-viral responses promoting the secretion of proinflammatory cytokines such as IL-12 and TNF.

**Antigen**  
**References:**

1. Lood C, *et al.* 2017. *J Exp Med.* 214:2103.
2. Prinz N, *et al.* 2011. *Blood.* 118:2322.
3. Gringhuis SI, *et al.* 2010. *Nat Immunol.* 11:419.
4. Cros J, *et al.* 2010. *Immunity.* 33:375.
5. Peng G, *et al.* 2005. *Science.* 309:1380.